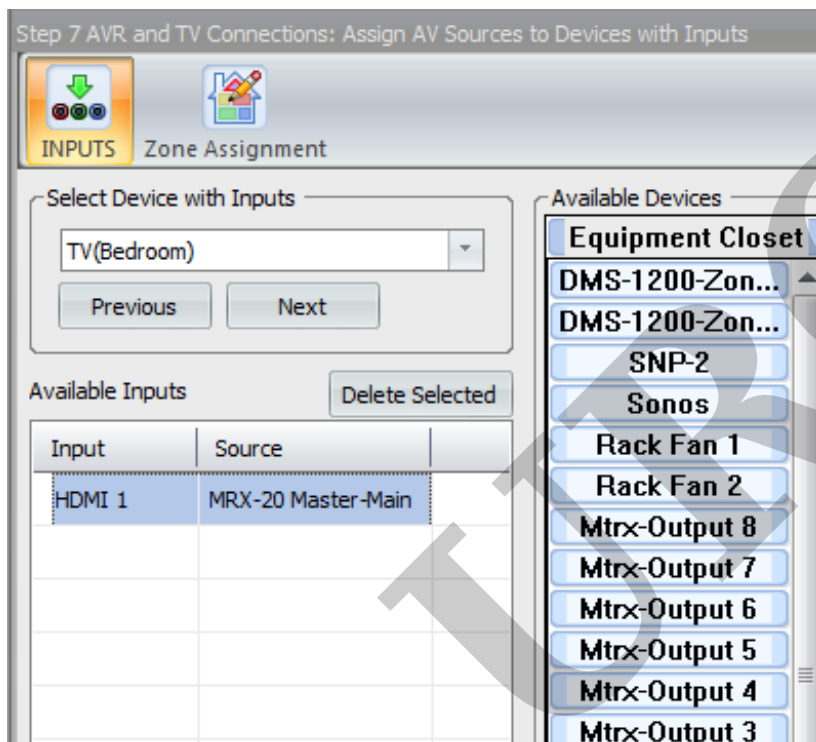


Firmware Message Stuck on Screen (MRX-20)

Last Modified on 05/10/2016 1:59 pm EDT

MRX-20 Firmware Message Stuck on Screen

If the MRX-20 is outputting HDMI to the TV, and you are seeing a firmware version being displayed on the TV for long amounts of time, you must check your assignments in **Step 7: A/V Inputs and Outputs of Accelerator**. If the MRX-20 is **NOT assigned** an input to a device in **Step 7**, the MRX-20 will display this message. **Assigning the MRX-20 an Output/input removes the error code** (loading error 0.0.201.4.9023).



Be sure to assign the input/output of the MRX-20 if utilizing the HDMI out.

MB

If you require any additional information or have any questions, please do not hesitate to contact our **technical support** team at **914-835-4484**.