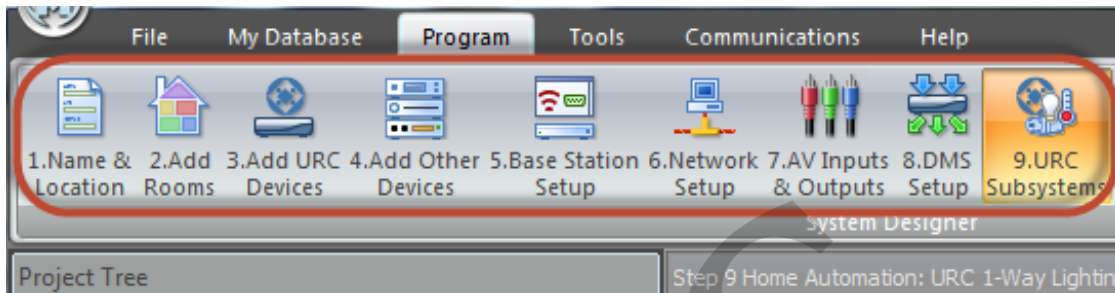


How to Edit a Driver within the Project Tree

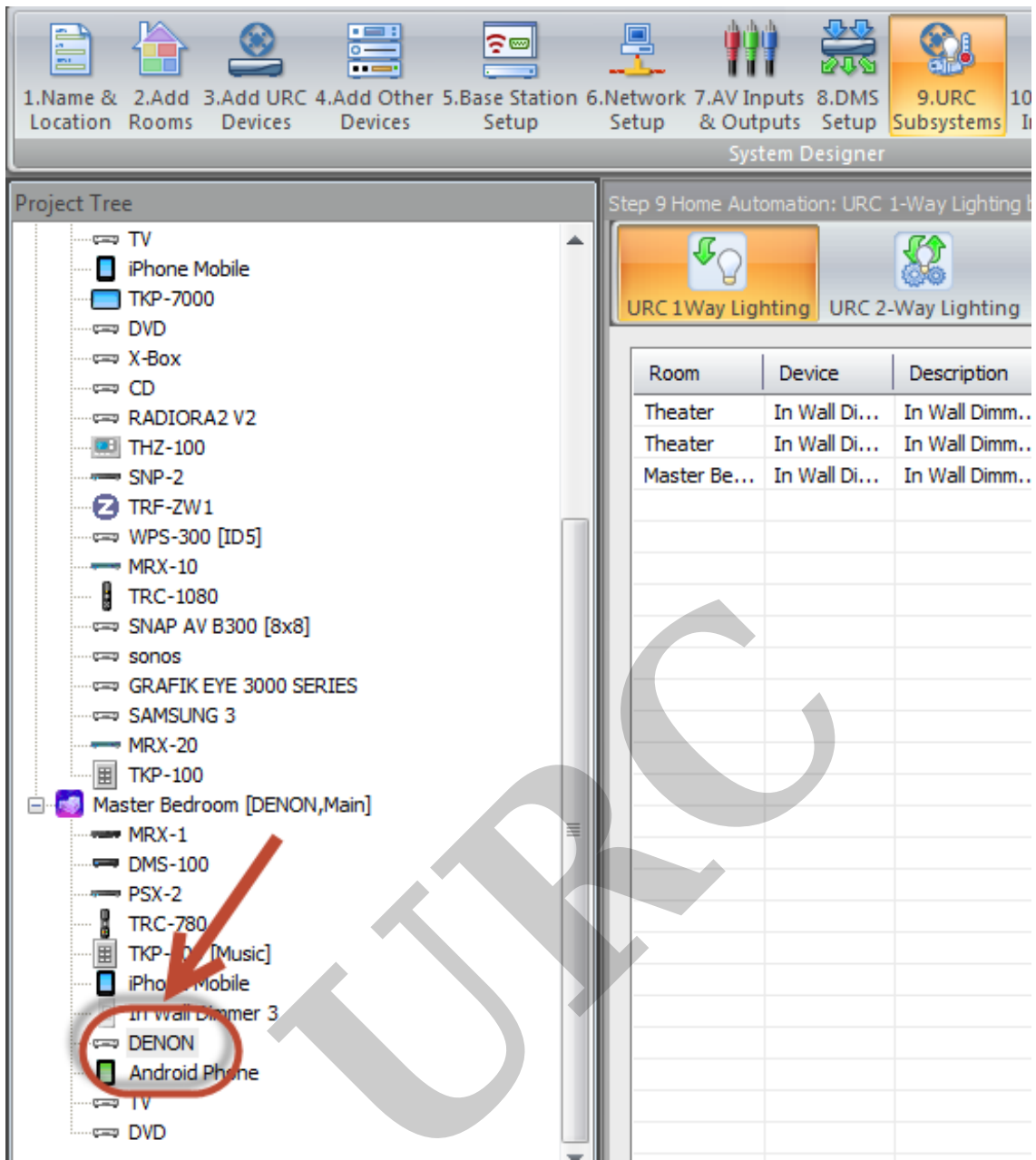
Last Modified on 05/10/2016 11:12 am EDT

When editing a driver it is highly recommended you do it in the My Database section so that your driver can be saved. If changes are needed on a particular project they can be changed within the project itself...

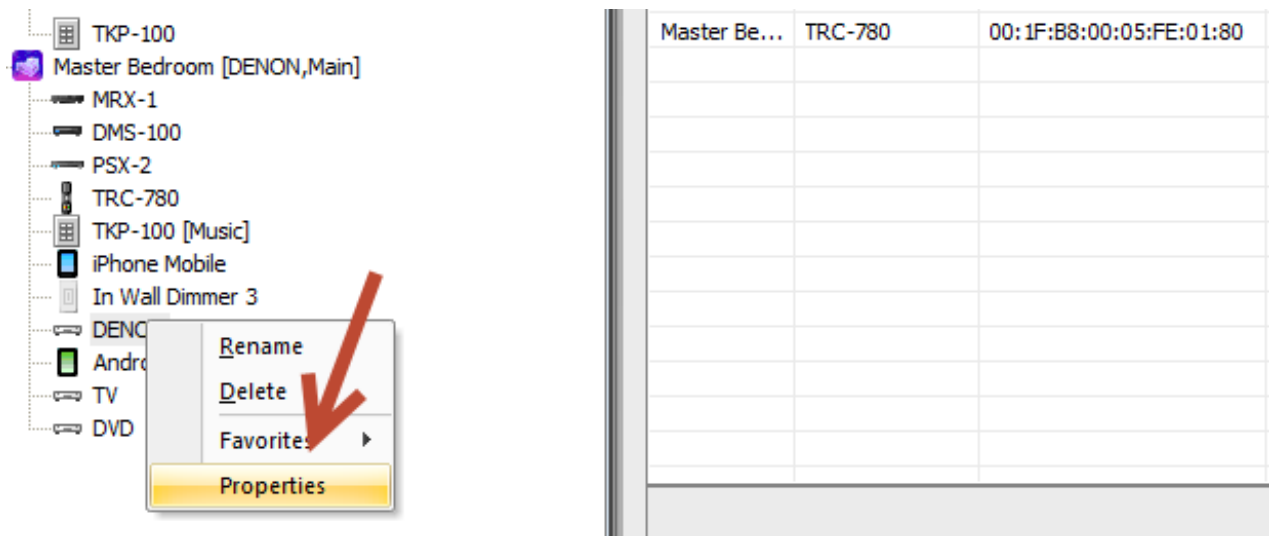
1. Must be in **Step 9** or below of the program tab



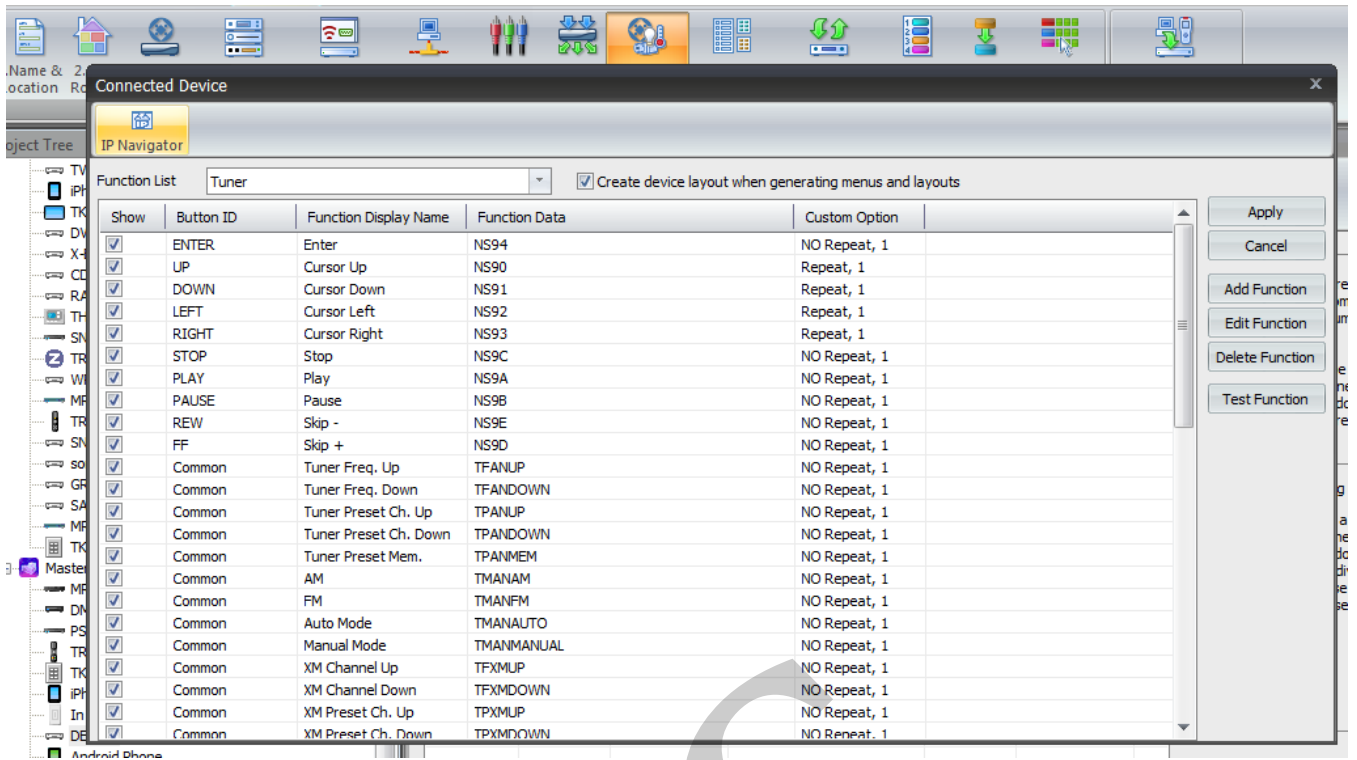
2. Highlight the **device** you want to edit



3. Right click; select **properties**



4. You can now **edit the driver**



MB

If you require any additional information or have any questions, please do not hesitate to contact our **technical support** team at **914-835-4484**.