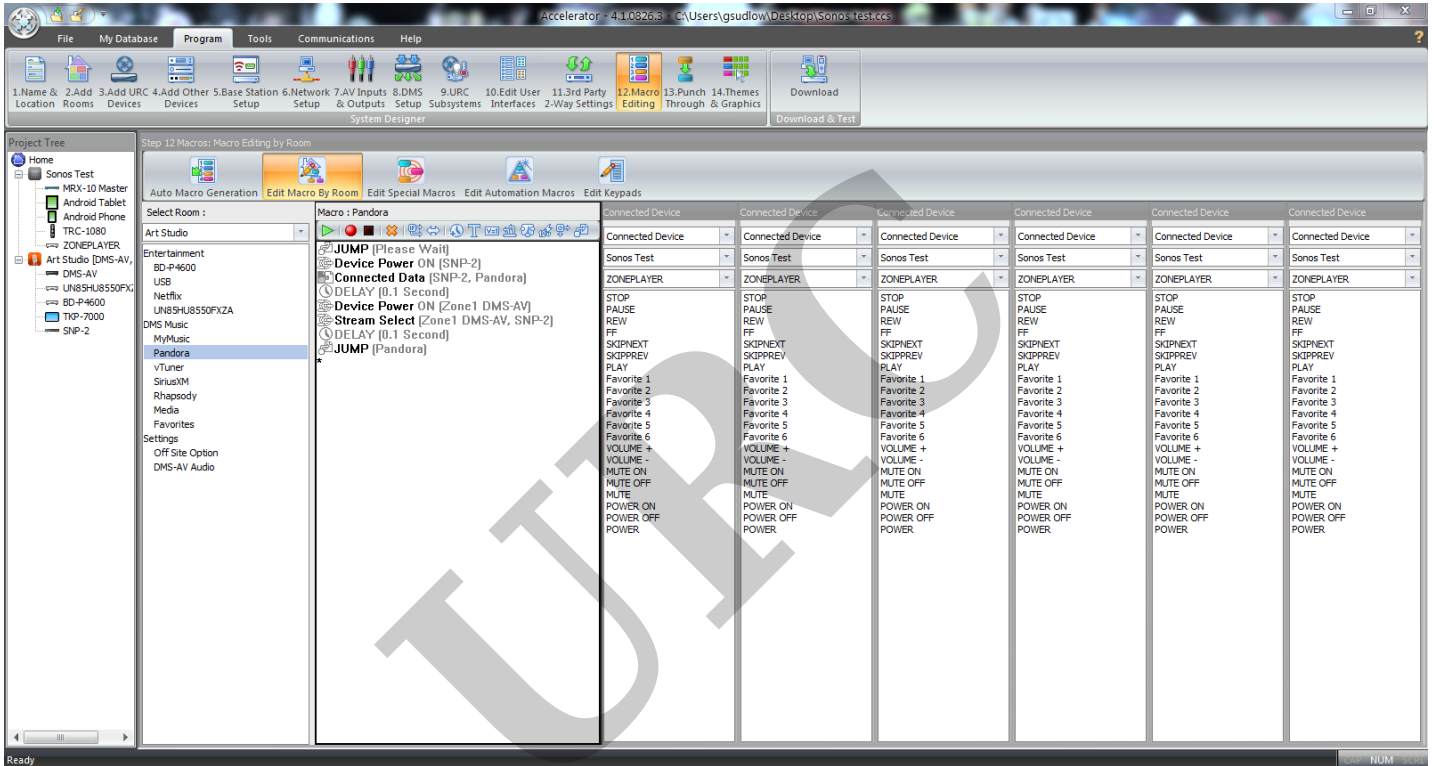


URC Accelerator: Default Layout/Original Menu Layout

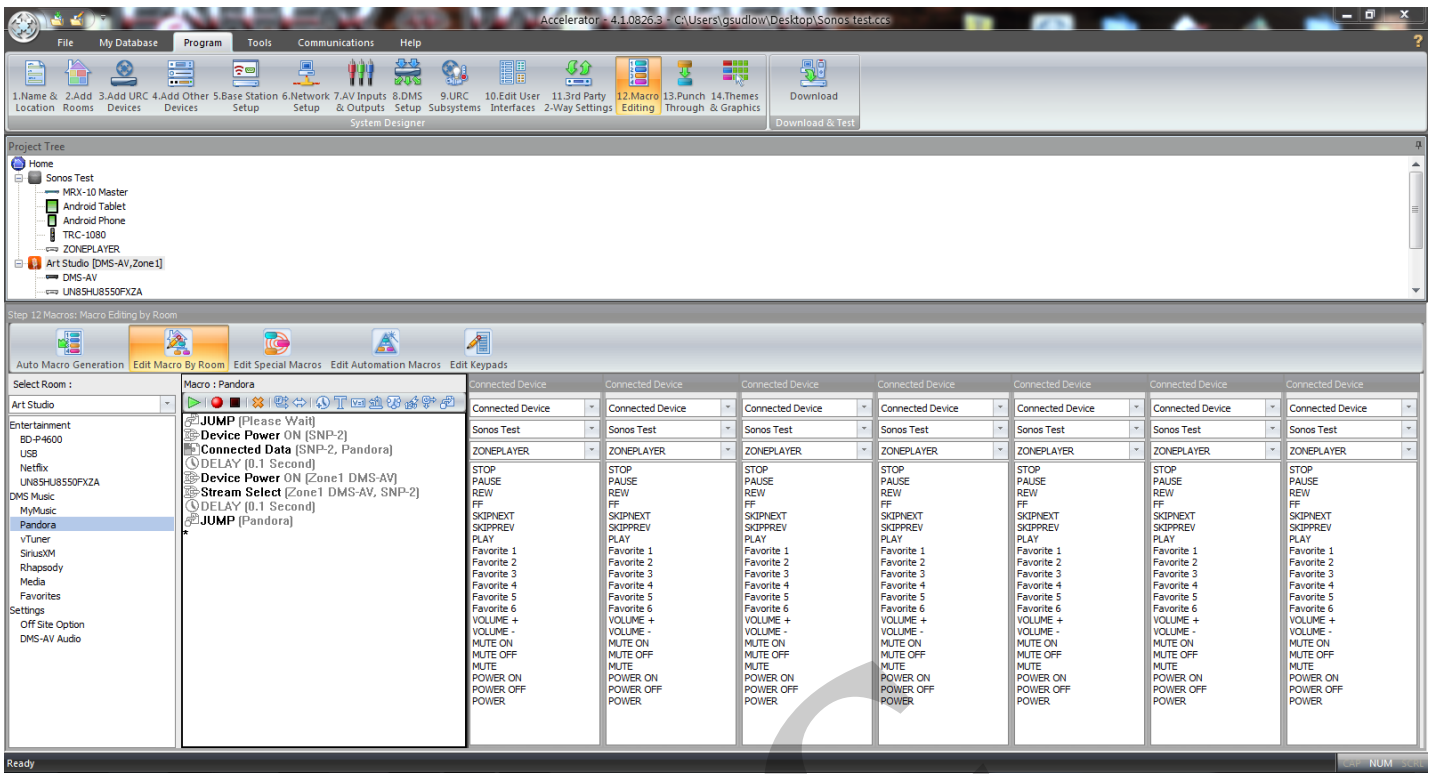
Last Modified on 05/12/2016 2:57 pm EDT

If the original layout for Accelerator has been altered from the default view, use these steps to restore the default layout:

Look of the Default Layout:



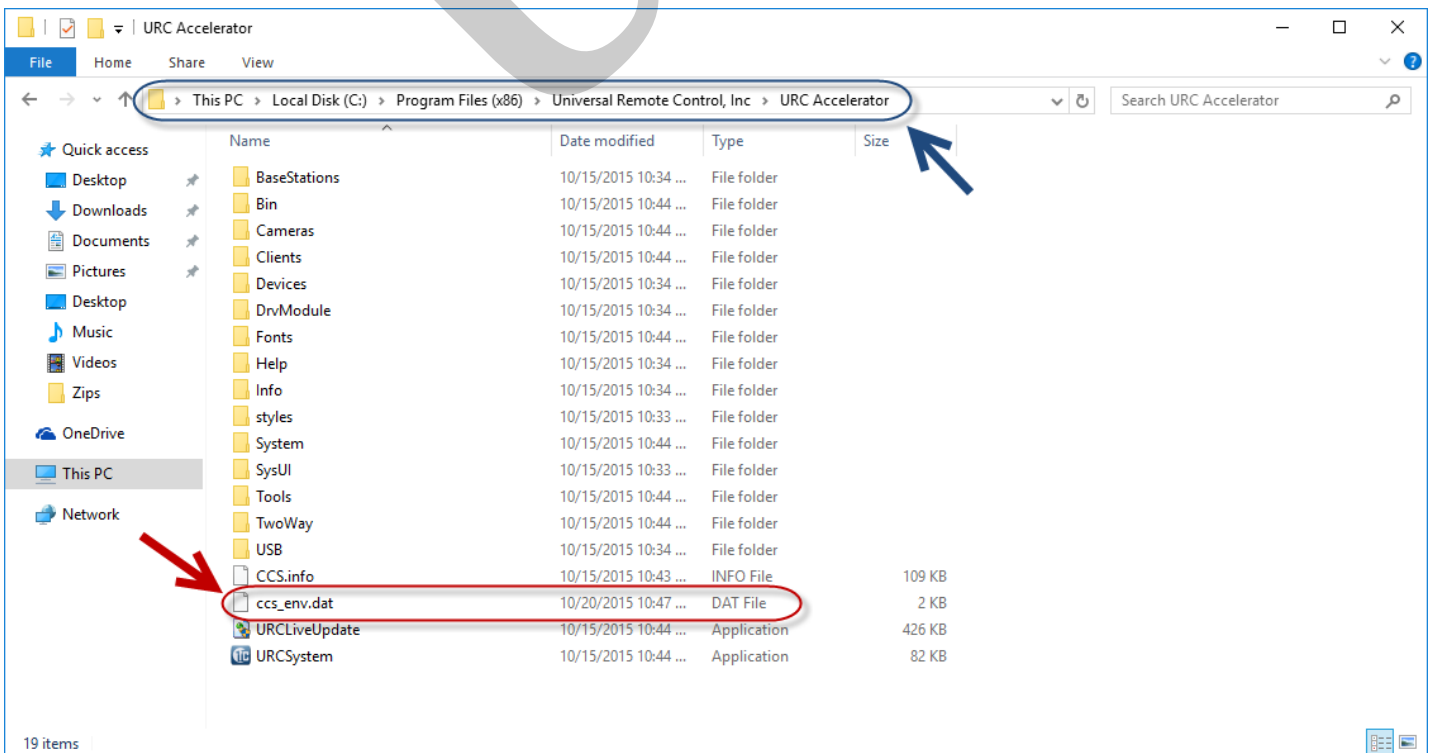
Look of an Altered Layout:



Deleting the "**ccs_env.dat**" in URC Accelerator folder reverts the layout back to the default layout the next time the Accelerator program is restarted under the administrator option.

1. Use this file path:

C:\Program Files (x86)\Universal Remote Control, Inc\URC Accelerator



2. Select and delete the file above (**ccs_dnv.dat**). Restart URC Accelerator. The layout is now defaulted back to its original layout.

If you require any additional information or have any questions, please do not hesitate to contact our **technical support** team at **914-835-4484**.

URC