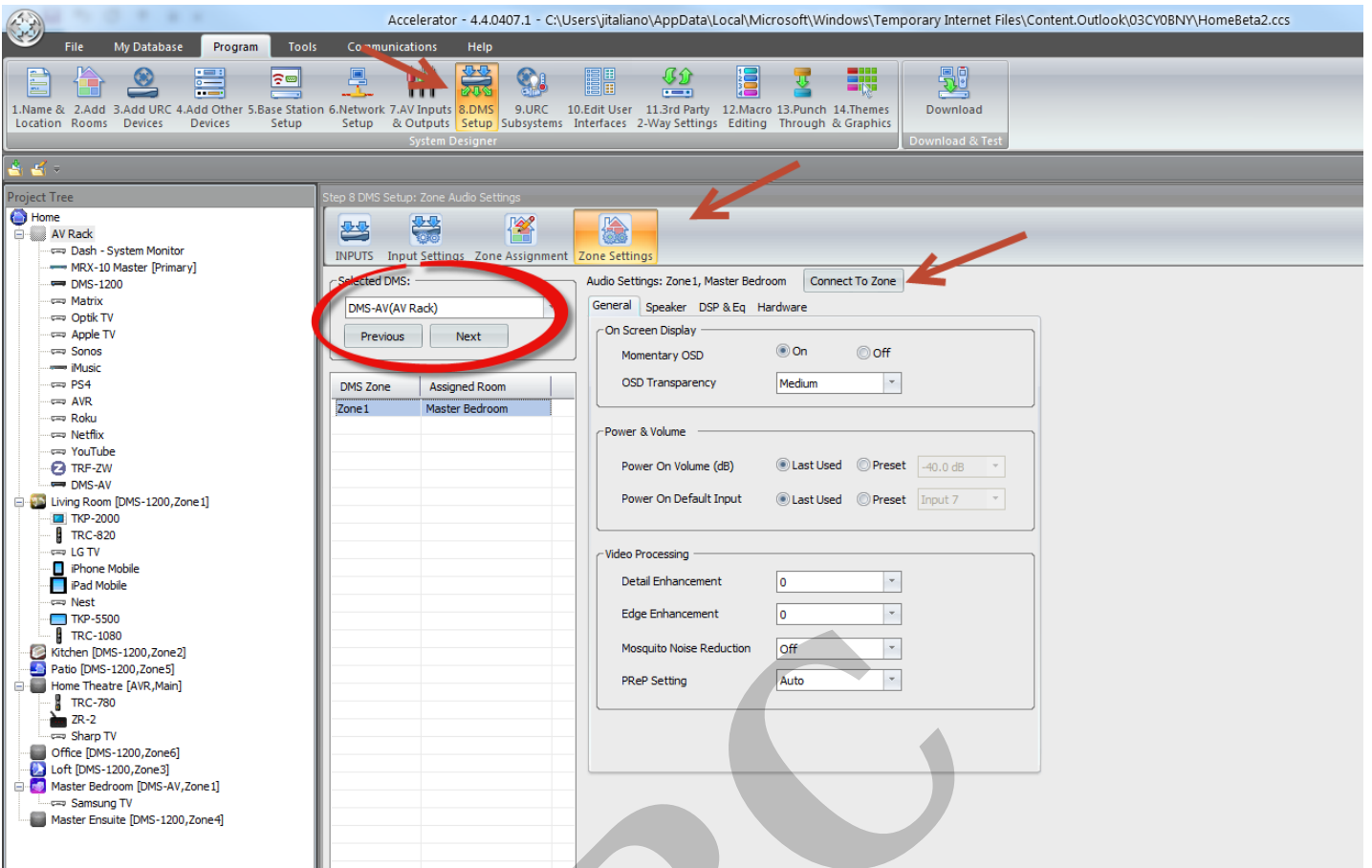


Using the DMS-AV On-Screen System Tool

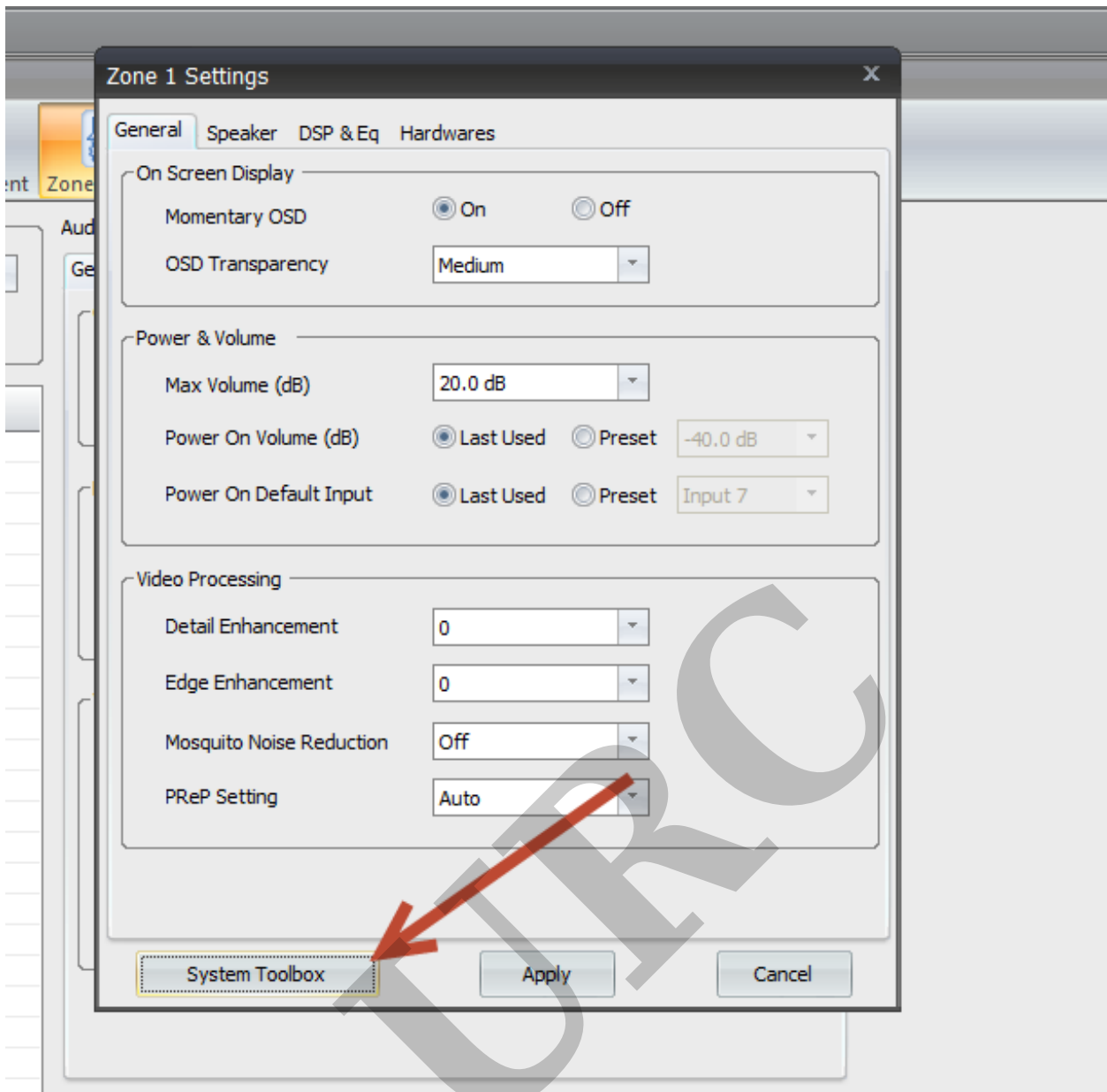
Last Modified on 05/24/2016 11:34 am EDT

The DMS-AV is a 7.2 surround sound processor and may require configuration to achieve best audio/video results. The following steps review the **DMS-AV System tools** used to configure the device properly.

1. Turn On the TV and set it to the HDMI input connected to the **DMS-AV** using the original TV remote control.
2. Plug in the **DMS-AVs** included omni-directional **microphone**. Do not try to utilize any other **microphone** as the **DMS-AV** has been calibrated to work with the included **microphone**.
3. Place the **microphone** in the end users preferred listening position.
4. Ensure that any noise in the room is minimized.
5. Position the laptop so that it is facing the TV screen clearly. Make sure not to block the line between each speaker.
6. Go to **Step 8: DMS Setup** in Accelerator, click **Zone Settings**. Select the **DMS-AV** in the drop-down, and choose **Connect to Zone**.



7. Select System Tool Box.



8. The **System Toolbox** window opens on the TV screen, enabling the option to send commands to the **DMS-AV** over the network. Press the **Menu** button to reveal the **DMS-AV's System Setup Menu**.
9. The TV screen displays the **DMS-AV** menu. Use the **Down cursor** to select the **Speaker/Room EQ Setup**. Use the **Right cursor** to enter the **next menu**.
10. If the **Speaker Configuration** has not been set, use the **cursor controls** to enter the number and type of speakers in the clients system via the **Speaker Config menu item**.
11. Once the speaker configuration has been set for all speakers and subwoofer, use the **Up cursor**, scroll up to select the top item on the menu above, **Auto Setup** and press the **Right cursor** key to display the next menu,

12. Once the **Auto Setup** menu appears, use the **Down cursor** to scroll down to the **Start item**, then click the **Right cursor** key to display the next menu. Make sure that all background sounds are eliminated, and click the **Right cursor** key to start the measurement of all speakers. Once the first stage is complete, you will be promoted to press the **Right cursor** again to measure speaker crossovers. When this is complete, return to the previous menu. The **Room EQ** item shown in 9, is now active. Select this to listen to the system with the calibration EQ on or off.

13. Returning to **Accelerator**, close **System toolbox** and select Apply on the **Zone 1** settings window. This applies all the calculations in **Accelerator**.

as

If you require any additional information or have any questions, please do not hesitate to contact our **technical support** team at **914-835-4484**.
