

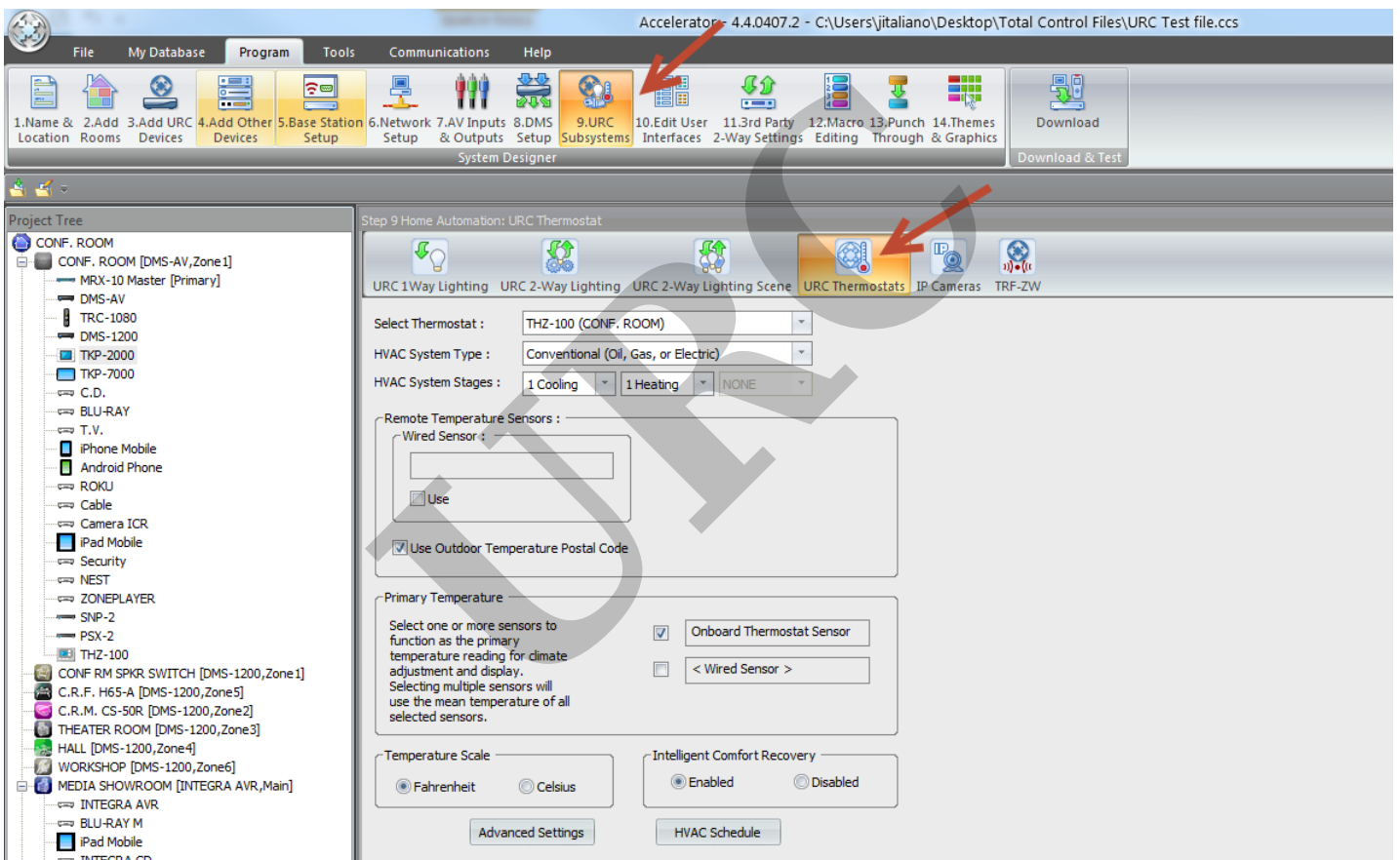
How To Setup External Sensor For the THZ-100

Last Modified on 05/10/2016 3:00 pm EDT

This article will cover setting up the **THZ-100** to use an **external sensor** for temperature readings.

1. Add the **THZ-100** to the project

2. **Step 9: URC Subsystems** and select **URC Thermostats**.



2. in the **Remote Temperature Sensor** :select **Use** and name the **sensor**.

Accelerator - 4.4.0407.2 - C:\Users\italiano\Desktop\Total Control Files\

File My Database Program Tools Communications Help

1.Name & Location 2.Add Rooms 3.Add URC Devices 4.Add Other Devices 5.Base Station Setup 6.Network Setup 7.AV Inputs & Outputs 8.DMS Setup 9.URC Subsystems 10.Edit User Interfaces 11.3rd Party 2-Way Settings 12.Macro Editing 13.Punch Through & Graphics 14.Themes & Graphics

Download Download & Test

System Designer

Project Tree

- CONF. ROOM
 - CONF. ROOM [DMS-AV,Zone1]
 - MRX-10 Master [Primary]
 - DMS-AV
 - TRC-1080
 - DMS-1200
 - TKP-2000
 - TKP-7000
 - C.D.
 - BLU-RAY
 - T.V.
 - iPhone Mobile
 - Android Phone
 - ROKU
 - Cable
 - Camera ICR
 - iPad Mobile
 - Security
 - NEST
 - ZONEPLAYER
 - SNP-2
 - PSX-2
 - THZ-100
 - CONF RM SPKR SWITCH [DMS-1200,Zone1]
 - C.R.F. H65-A [DMS-1200,Zone5]
 - C.R.M. CS-50R [DMS-1200,Zone2]
 - THEATER ROOM [DMS-1200,Zone3]
 - HALL [DMS-1200,Zone4]
 - WORKSHOP [DMS-1200,Zone6]
- MEDIA SHOWROOM [INTEGRA AVR,Main]
 - INTEGRA AVR
 - BLU-RAY M
 - iPad Mobile
 - INTEGRA CD
 - TV M

Step 9 Home Automation: URC Thermostat

URC 1Way Lighting URC 2-Way Lighting URC 2-Way Lighting Scene URC Thermostats IP Cameras TRF-ZW

Select Thermostat : THZ-100 (CONF. ROOM)

HVAC System Type : Conventional (Oil, Gas, or Electric)

HVAC System Stages : 1 Cooling 1 Heating NONE

Remote Temperature Sensors :

Wired Sensor : thermometer

Use

Use Outdoor Temperature Postal Code

Primary Temperature

Select one or more sensors to function as the primary temperature reading for climate adjustment and display. Selecting multiple sensors will use the mean temperature of all selected sensors.

Onboard Thermostat Sensor

thermometer

Temperature Scale

Fahrenheit Celsius

Intelligent Comfort Recovery

Enabled Disabled

Advanced Settings HVAC Schedule

3. In the **Primary Temperature** field uncheck **Onboard Thermostat Sensor**, and select the **external sensor**.

URC 1Way Lighting URC 2-Way Lighting URC 2-Way Lighting Scene URC Thermostats IP Cameras TRF-ZW

Select Thermostat : THZ-100 (CONF. ROOM) ▾
HVAC System Type : Conventional (Oil, Gas, or Electric) ▾
HVAC System Stages : 1 Cooling ▾ 1 Heating ▾ NONE ▾

Remote Temperature Sensors :
Wired Sensor :
thermometer
 Use
 Use Outdoor Temperature Postal Code

Primary Temperature
Select one or more sensors to function as the primary temperature reading for climate adjustment and display. Selecting multiple sensors will use the mean temperature of all selected sensors.
 Onboard Thermostat Sensor
 thermometer

Temperature Scale
 Fahrenheit Celsius

Intelligent Comfort Recovery
 Enabled Disabled

Advanced Settings HVAC Schedule

as

If you require any additional information or have any questions, please do not hesitate to contact our **technical support** team at **914-835-4484**.