

How to Adjust Accelerator Options

Last Modified on 08/09/2023 6:16 pm EDT

How to Adjust Accelerator Options

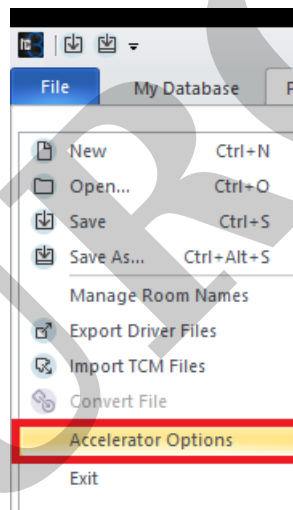
URC Accelerator 3 & TC Flex 2 software provide countless options to configure and optimize settings to achieve performance and flexibility for almost any application.

This article details the steps required to change or adjust the default **Accelerator Options** on your laptop or PC accelerator software installation.

Note: This articles details a Windows 10 OS installation

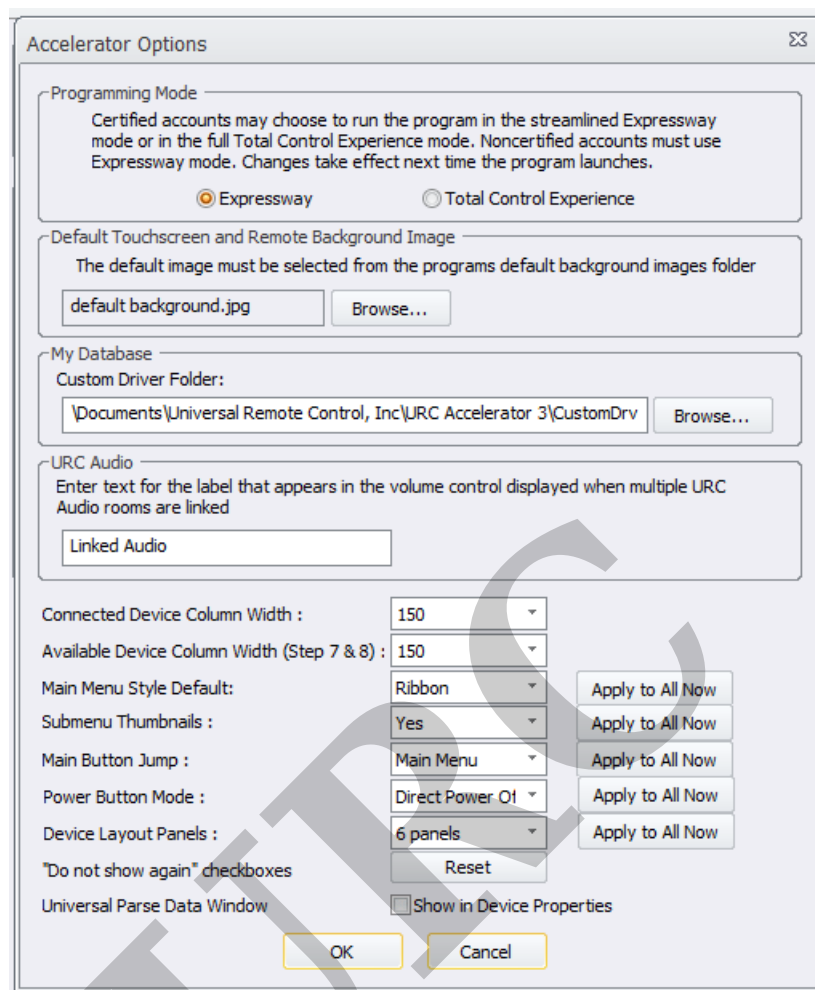
Accessing the Accelerator Options

From the Accelerator program **File** menu, select **Accelerator Options** as shown below:



Accelerator Options Main Screen:

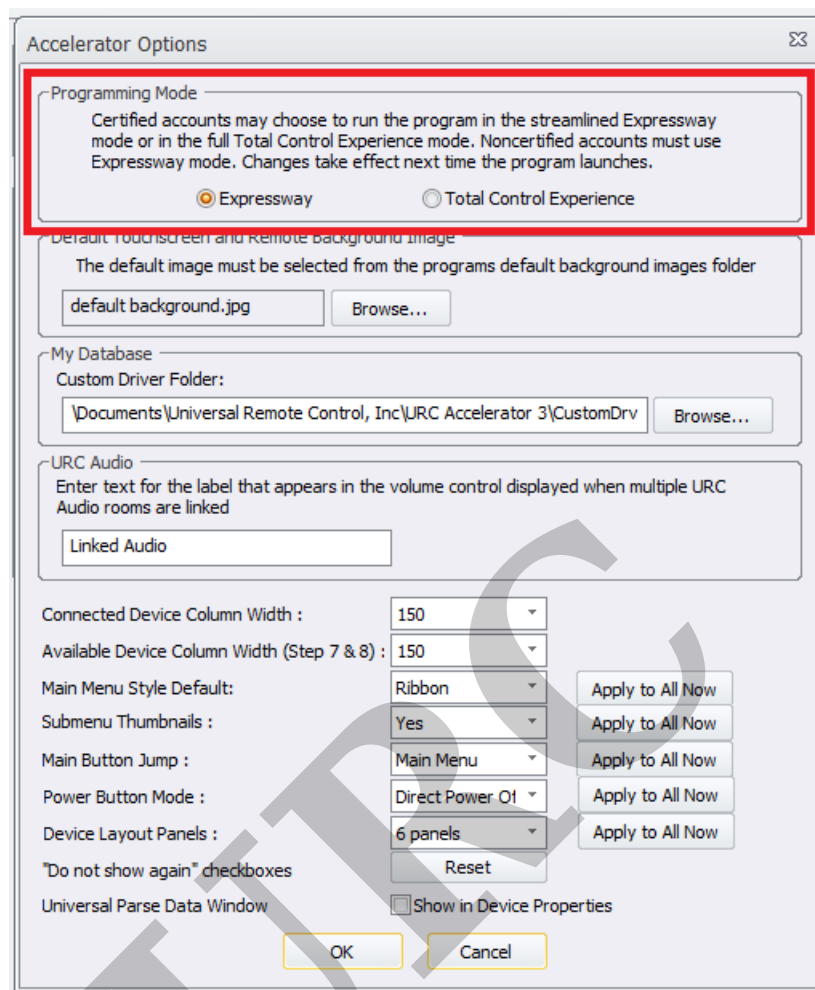
After selecting Accelerator Options as shown above, the **Accelerator Options** main screen will open showing the available adjustable options.



Programming Mode:

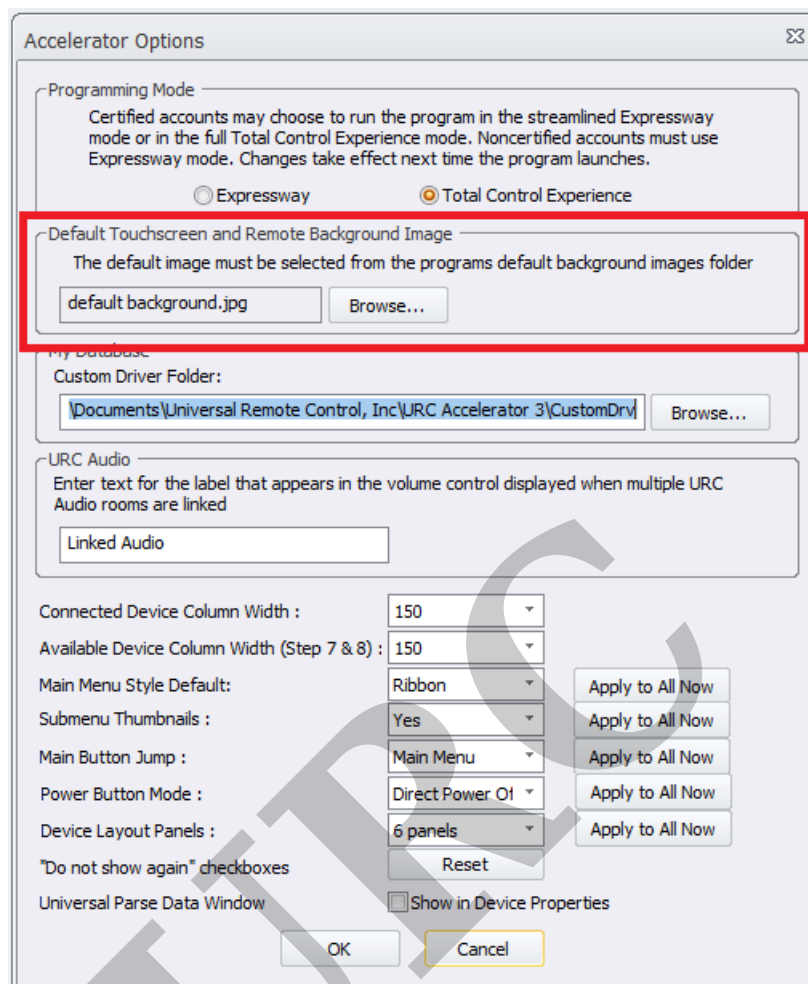
Programming Mode determines the level of Total Control Accelerator 3 program that will run based upon the dealer certification level.

The options are Expressway or Total Control Experience. Select the appropriate radio button. If changes are made, they will take effect after restarting the program.



Default Touchscreen and Remote Programming Background Image:

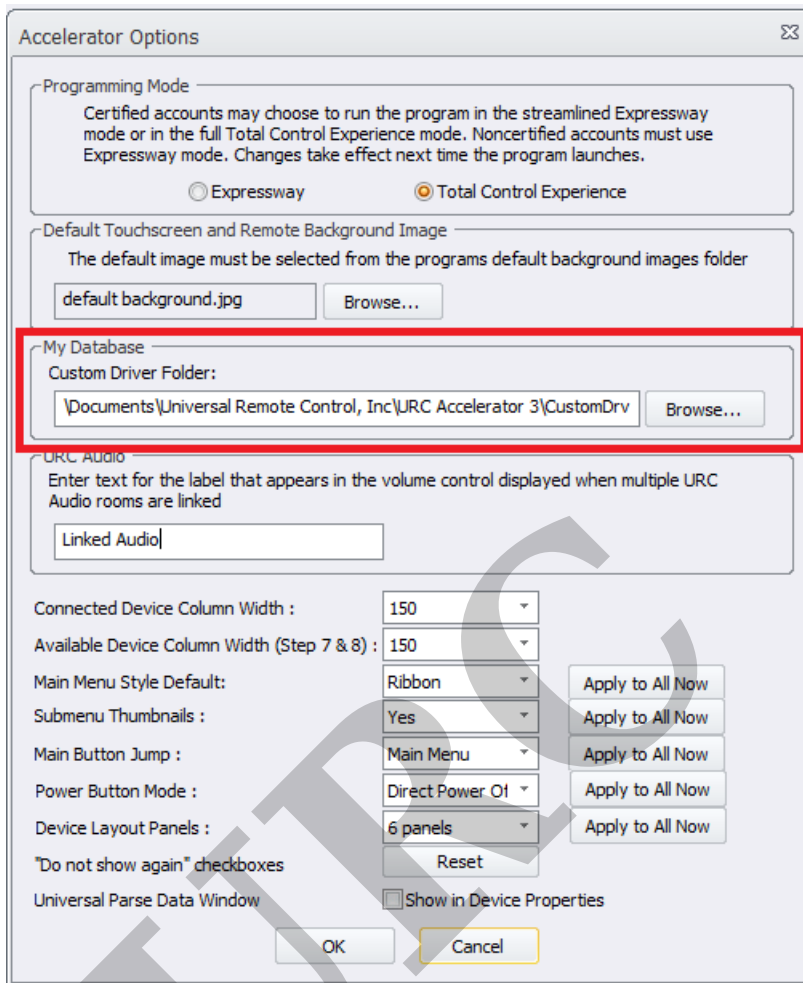
This option will allow you to change the default background image displayed on Touchscreens and mobile devices.



My Database:

This option will allow you to change the default location of the Custom Driver Folder in the Accelerator program. Make sure to change the entire file path as it may be longer than displayed in the white box.

Pro Tip: This option can be used to share a Custom Driver Folder in an organization using Dropbox or other online file sharing program.



URC Audio:

This option will allow you to change the default text that appears in the volume control displayed when multiple URC Audio rooms are linked.

For example, it could be changed to say "Rooms Volume" or "Linked Areas" if desired.

Accelerator Options

Programming Mode
 Certified accounts may choose to run the program in the streamlined Expressway mode or in the full Total Control Experience mode. Noncertified accounts must use Expressway mode. Changes take effect next time the program launches.

Expressway Total Control Experience

Default Touchscreen and Remote Background Image
 The default image must be selected from the programs default background images folder

default background.jpg Browse...

My Database
 Custom Driver Folder:
 \Documents\Universal Remote Control, Inc\URC Accelerator 3\CustomDrv Browse...

URC Audio
 Enter text for the label that appears in the volume control displayed when multiple URC Audio rooms are linked

Linked Audio

Connected Device Column Width : 150

Available Device Column Width (Step 7 & 8) : 150

Main Menu Style Default: Ribbon Apply to All Now

Submenu Thumbnails : Yes Apply to All Now

Main Button Jump : Main Menu Apply to All Now

Power Button Mode : Direct Power Off Apply to All Now

Device Layout Panels : 6 panels Apply to All Now

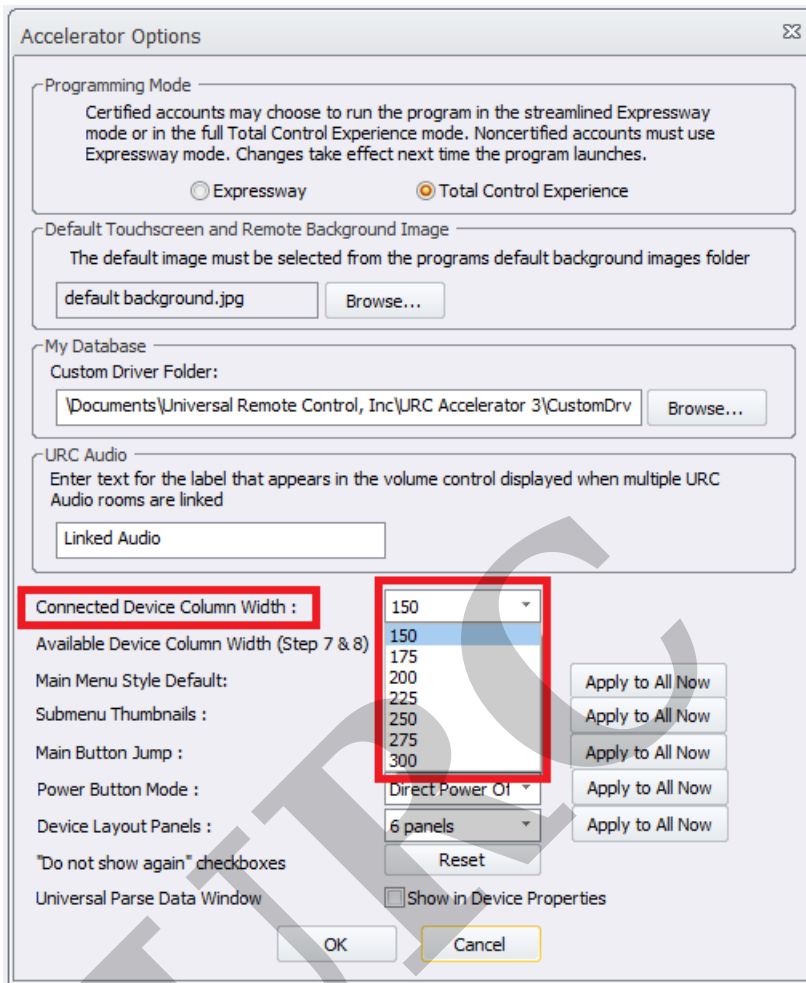
"Do not show again" checkboxes
 Show in Device Properties

Universal Parse Data Window

OK Cancel

Connected Device Column Width:

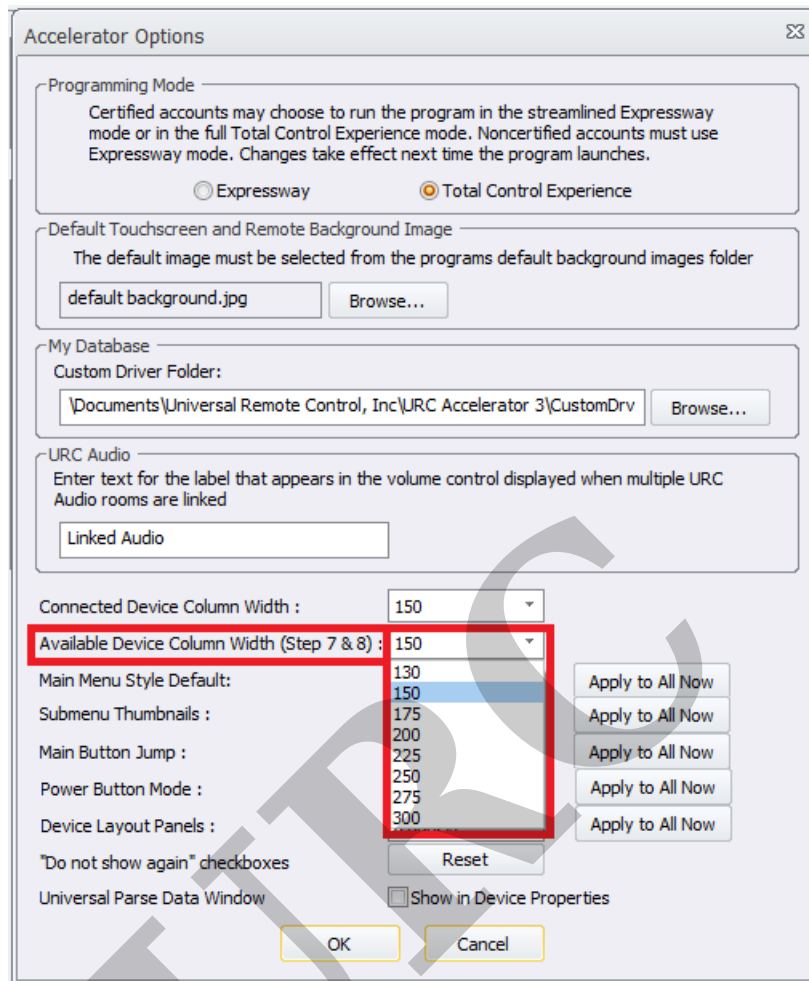
This option will allow you to change the default **Connected Device Column Width** in Step #12b and other steps to allow for greater visibility of listed commands. Select the desired width and then restart the software. Changes will be applied after the restart.



Available Device Column Width (Step 7 & 8):

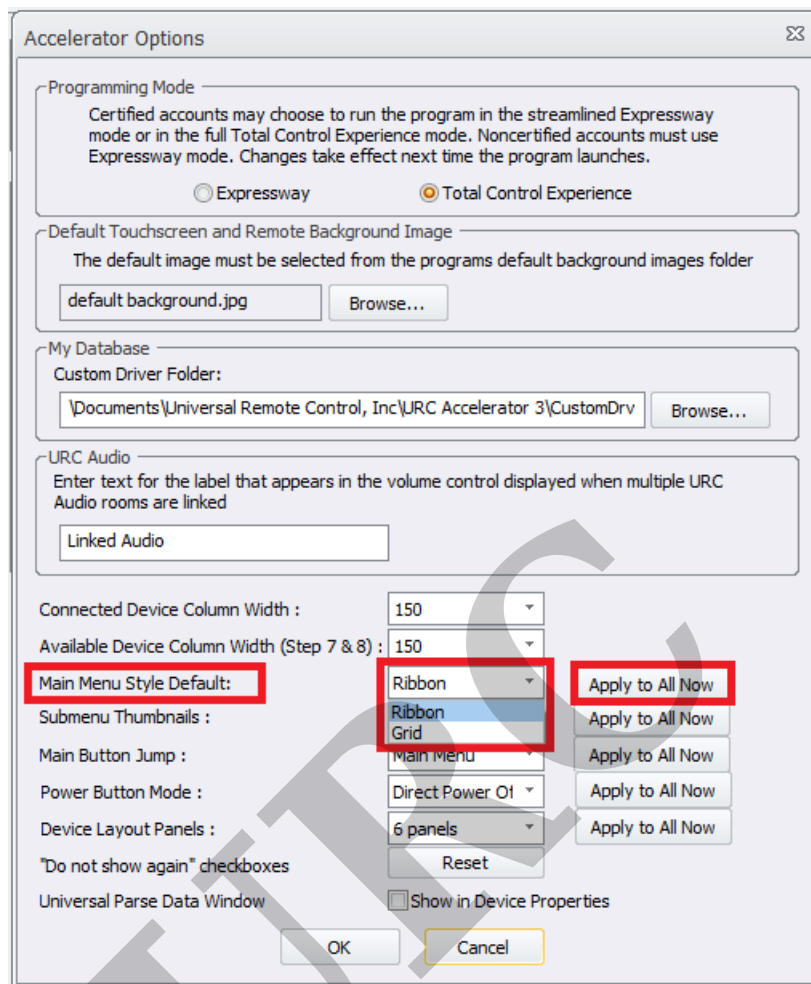
This option will allow you to change the default **Available Device Column Width** in **Steps #7 & 8** to allow for greater visibility of listed commands. This can be useful when devices such as matrix switchers have long names for the commands.

Select the desired width and then restart the software. Changes will be applied after the restart.



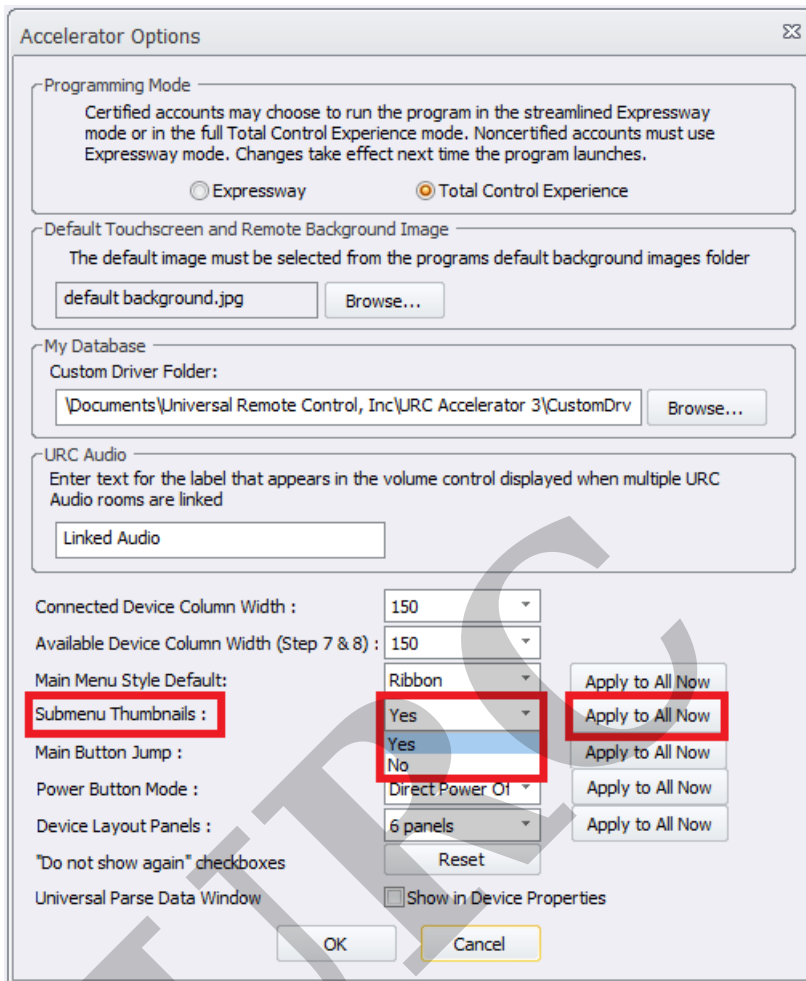
Main Menu Style Default:

This option will allow you to change the default setting for the **Main Menu Style** to be **Ribbon** style or **Grid** style. Additionally, there is an option for selecting the "**Apply to All Now**" button.



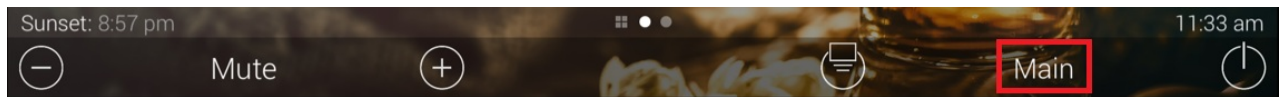
Submenu Thumbnails:

This option will allow you to change the option for displaying the **Submenu Thumbnails** on the URC UI's. The thumbnails are small icons that show the devices that are contained within the submenu(s). For example, it may show a DirecTV icon when using a DirecTV box in the Entertainment submenu. Additionally, there is an option for selecting the "**Apply to All Now**" button.



Main Button Jump:

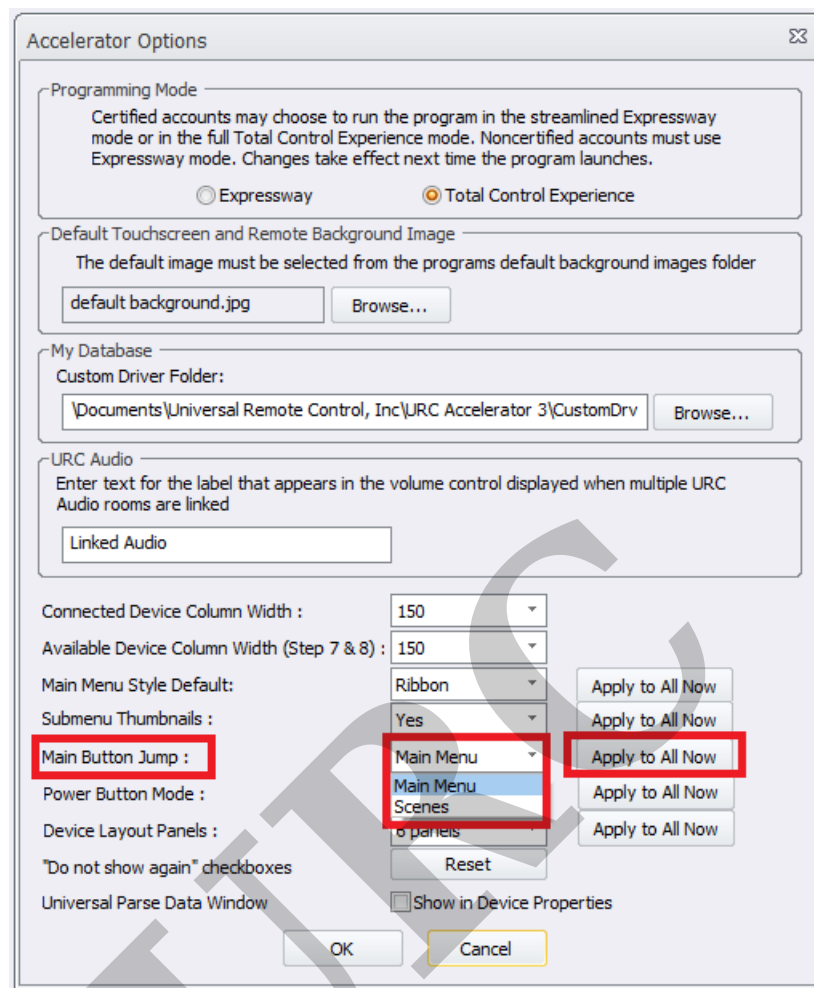
This option will allow you to change the default option for the Main Button operation on URC touchpanels & mobile devices. Additionally, there is an option for selecting the "Apply to All Now" button.



Select the desired option from the drop-down menu. There are two (2) available options:

Main Menu: This option will allow the user to jump directly to the **Main Menu** ribbon or **Grid** layout screen using the Main Button as shown above.

Scenes: This option will allow the user to jump directly to the **Scenes** page.



Power Button Mode:

This option will allow you to change the default option for the Power Button operation on touchpanels & mobile devices. Select the desired option from the drop-down menu. Additionally, there is an option for selecting the "**Apply to All Now**" button.

Direct Power Off: This option will allow the end-user to power off immediately without any other dialog boxes.

Confirm Power Off: This option will ask the end-user to confirm power off via an "**Are You Sure?**" dialog box on the UI.

Open Power Menu: This option will open to the Power menu for possible additional options as programmed by the system programmer.

The default choices are "Power Off this Room" and "Turn Off this House".

Accelerator Options Σ

Programming Mode
 Certified accounts may choose to run the program in the streamlined Expressway mode or in the full Total Control Experience mode. Noncertified accounts must use Expressway mode. Changes take effect next time the program launches.

Expressway Total Control Experience

Default Touchscreen and Remote Background Image
 The default image must be selected from the programs default background images folder

default background.jpg

My Database
 Custom Driver Folder:

URC Audio
 Enter text for the label that appears in the volume control displayed when multiple URC Audio rooms are linked

Connected Device Column Width :

Available Device Column Width (Step 7 & 8) :

Main Menu Style Default:

Submenu Thumbnails :

Main Button Jump :

Power Button Mode :

Device Layout Panels :

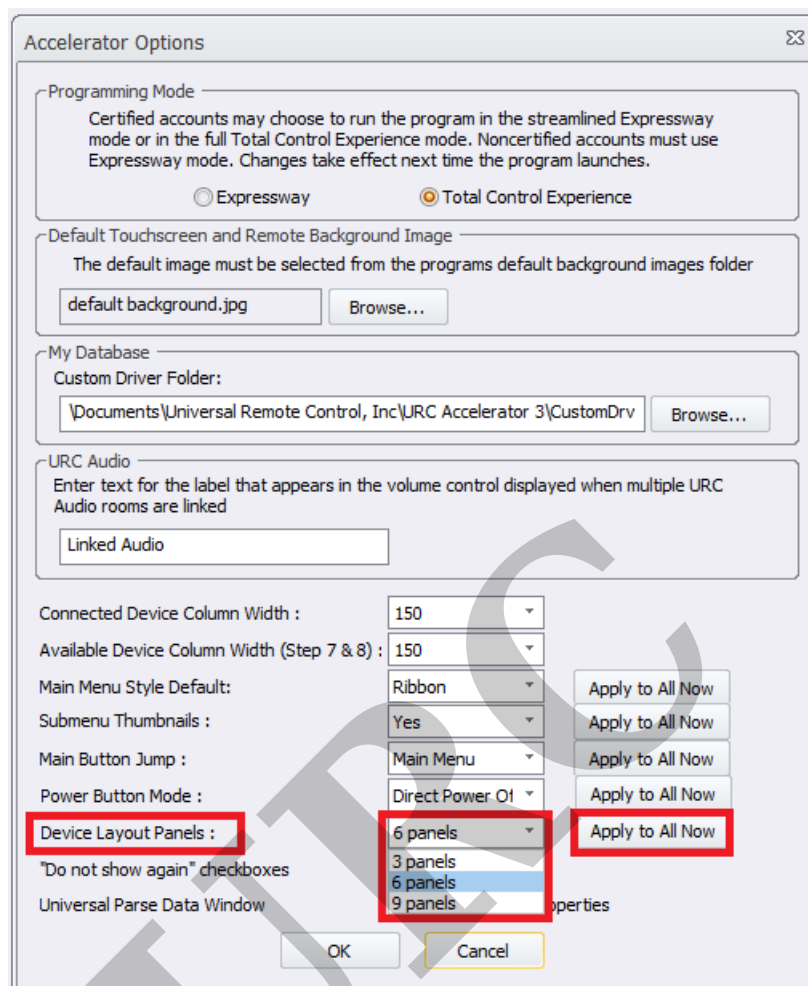
"Do not show again" checkboxes
 Show in Device Properties

Universal Parse Data Window Show in Device Properties

Device Layout Panels:

This option will allow you to change the default option for the Custom **Device Layout Panels** on touchpanels & mobile devices. Select the desired option from the drop-down menu. Additionally, there is an option for selecting the "**Apply to All Now**" button.

Please refer to the [Total Control – Custom Device Layouts Programming Guide](#) for additional information on selecting the appropriate panel configuration.



"Do Not Show Again" Checkboxes:

This option will allow you to reset the "Do not show again" dialog boxes that may have been disabled in the past while using the software. Selecting "**Reset**" will show them again when appropriate while using the software.

Accelerator Options

Programming Mode
 Certified accounts may choose to run the program in the streamlined Expressway mode or in the full Total Control Experience mode. Noncertified accounts must use Expressway mode. Changes take effect next time the program launches.

Expressway Total Control Experience

Default Touchscreen and Remote Background Image
 The default image must be selected from the programs default background images folder

default background.jpg Browse...

My Database
 Custom Driver Folder:
 \Documents\Universal Remote Control, Inc\URC Accelerator 3\CustomDrv Browse...

URC Audio
 Enter text for the label that appears in the volume control displayed when multiple URC Audio rooms are linked

Linked Audio

Connected Device Column Width : 150

Available Device Column Width (Step 7 & 8) : 150

Main Menu Style Default: Ribbon Apply to All Now

Submenu Thumbnails : Yes Apply to All Now

Main Button Jump : Main Menu Apply to All Now

Power Button Mode : Direct Power Off Apply to All Now

Device Layout Panels : 6 panels Apply to All Now

"Do not show again" checkboxes Reset

Universal Parse Data Window Show in Device Properties

OK Cancel

Universal Parse Data Window:

This option will allow you to change the option for showing for showing the Universal Parse Data in the device properties area.

Universal Parse Data is the information used for delivering two-way volume feedback for 3rd party AVR's. Only specified RS-232 and IP AVR's have the ability to provide feedback.

! Warning: Modifying any of the information incorrectly within the Universal Parse Data section can break the volume feedback functionality and possibly control of the AVR. Modifying this should only be used by expert programmers, or if directed by URC tech support.

Accelerator Options

Programming Mode
 Certified accounts may choose to run the program in the streamlined Expressway mode or in the full Total Control Experience mode. Noncertified accounts must use Expressway mode. Changes take effect next time the program launches.

Expressway Total Control Experience

Default Touchscreen and Remote Background Image
 The default image must be selected from the programs default background images folder

default background.jpg

My Database
 Custom Driver Folder:

\\Documents\Universal Remote Control, Inc\URC Accelerator 3\CustomDrv

URC Audio
 Enter text for the label that appears in the volume control displayed when multiple URC Audio rooms are linked

Linked Audio

Connected Device Column Width : 150

Available Device Column Width (Step 7 & 8) : 150

Main Menu Style Default: Ribbon

Submenu Thumbnails : Yes

Main Button Jump : Main Menu

Power Button Mode : Direct Power Off

Device Layout Panels : 6 panels

"Do not show again" checkboxes

Universal Parse Data Window Show in Device Properties

Additional Information & Resources:

Please refer to the [Total Control - Custom Device Layouts Programming Guide](#) for additional information on selecting the appropriate panel configuration.

To learn more about Accelerator 3 configuration and programming, please see the Accelerator 3 online [Programming Guide](#).