

How To Convert/Relocate a Master System Controller

Last Modified on 07/21/2025 9:20 am EDT

This article details the steps to **convert** a **Master System Controller (MSC)** to another type of Master System Controller, or to relocate the **MSC** to another room/zone in the project. An example of using this feature would be for a customer who would like to upgrade an MRX-8 to an MRX-15 or MRX-30. **Converting** the file mitigates the installer from having to re-write the program.

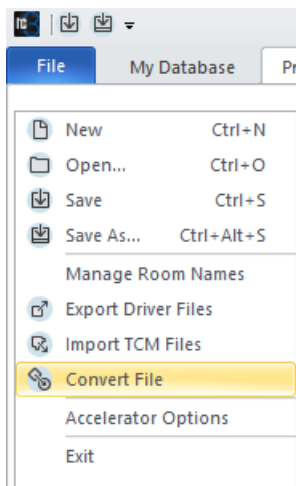
To Convert a File to a Different Master System Controller:

1. **Open** the **file** to be **converted**.

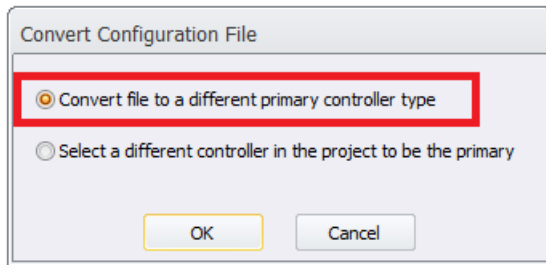
Pro Tip: It is recommended to perform a "**File Save-As**" to preserve the original file if ever needed again.

Pro Tip: You will need to ***add the new controller to the project*** prior to performing the convert process.

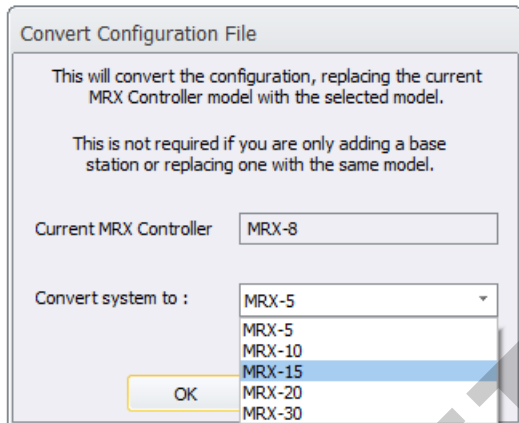
2. Select the **File** tab.
3. Select the **Convert File** option.



4. Select Option 1. "**Convert File to a different primary controller type**".

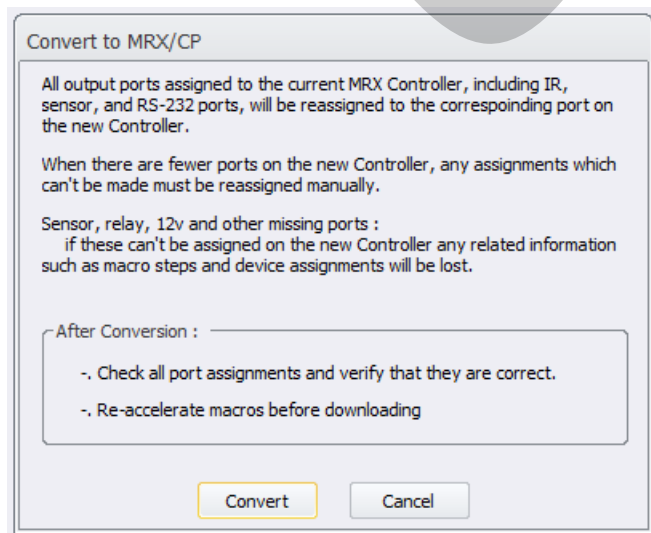


5. **Select** the **new Primary Controller** to **convert** the file to from the drop-down list.



6. Be sure to review all IR and RS-232 outputs in **Step 5: Base Station Setup**, especially if converting to a base station with fewer outputs/ports. Also, be sure to re-accelerate in Steps #11 & Step #12 after the conversion.

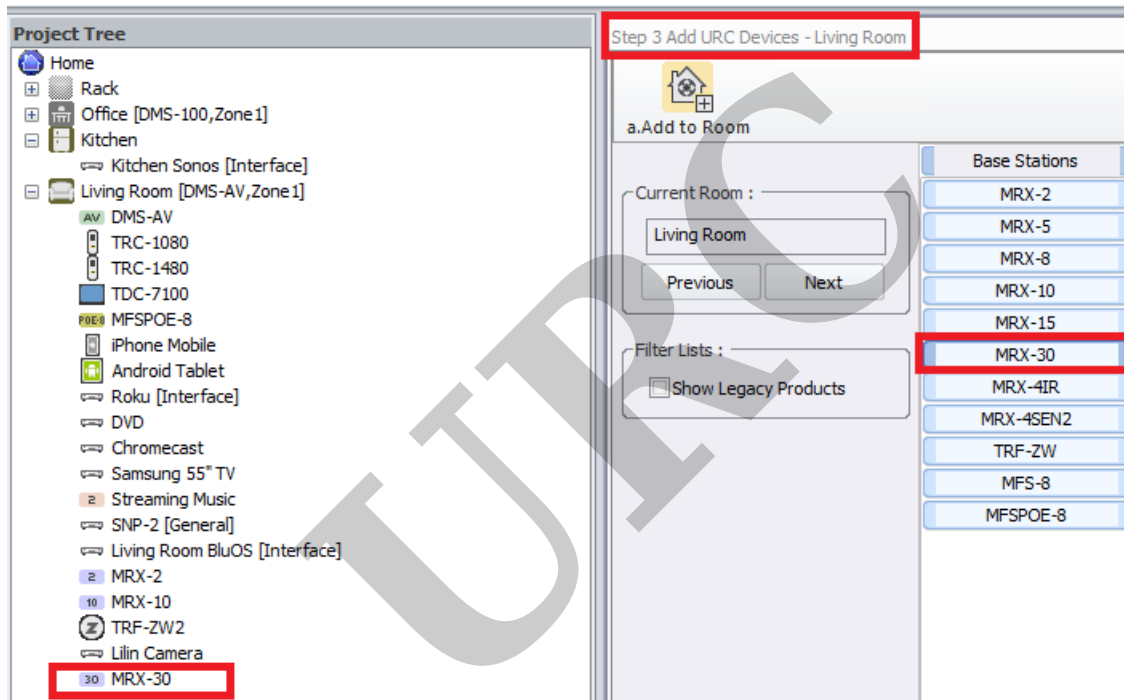
The software will alert you as shown in the warning below:



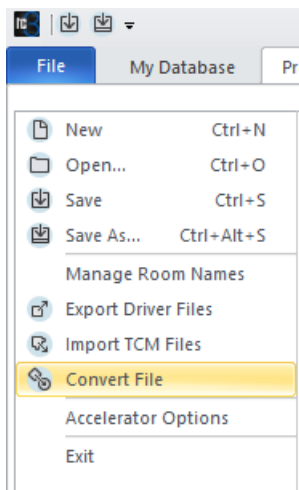
To Relocate a Master System Controller to a Different Room/Zone:

Pro Tip: It is recommended to perform a "**File Save-As**" to preserve the original file if ever needed again.

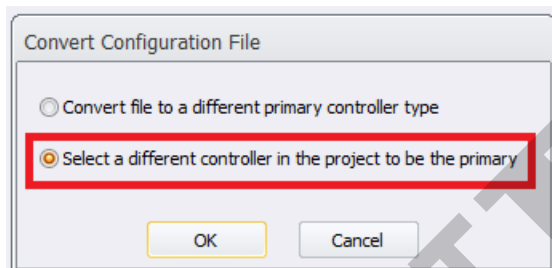
1. **Open** the **file** to be **modified**.
2. To **relocate** a Master system controller to a different room in the project, first add another MRX device from **Step 3: URC Devices** to the desired room. The example below shows a MRX-30 added to the Living Room as this shall be the NEW room location for the Master System Controller.



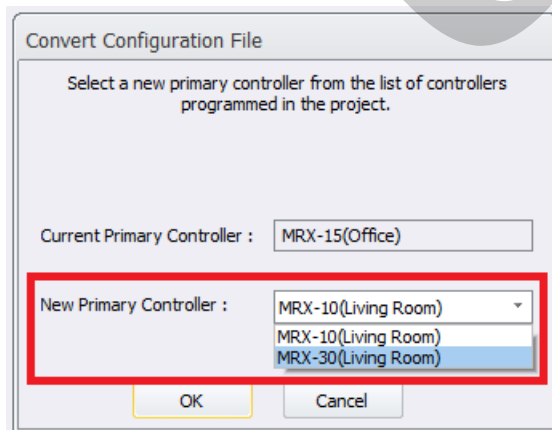
2. Select the **File** tab.
3. Select the **Convert File** option.



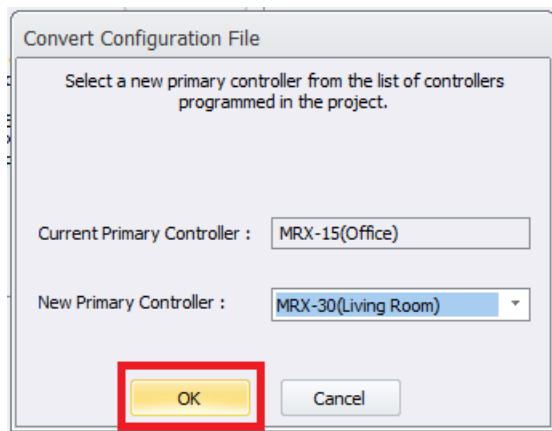
3. Select Option 2: **"Select a different controller in the project to be the primary"**.



4. Select the MRX unit in the new room from the drop-down list to be the **"New Primary Controller"**.



5. Click the "OK" button to complete the process.



Note: Be sure to **download** the file to the **ENTIRE system** to **apply** the **MRX** change.

Additional Information & Resources:

Please refer to [this article](#) for the process for converting system files when using Accelerator 1 or 2.

To learn more about Accelerator 3 configuration and programming, please see the Accelerator 3 online [Programming Guide](#).