

Lutron Unified Module with RadioRA3 and Homeworks QSX

Last Modified on 08/09/2023 6:21 pm EDT

Application Note:

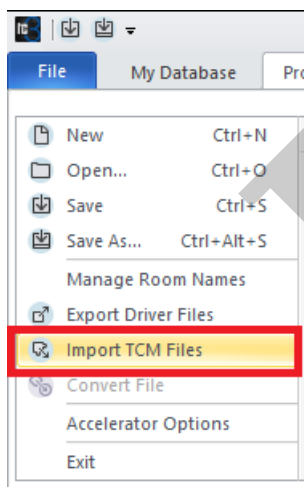
When integrating with RadioRA3 and Homeworks QSX (Not QS), you only need to use the **Lutron Unified Control Two-Way Module**.

It is not necessary to use the Lutron Telnet Expansion Two-Way Module at all (<https://urcportal.com/Main/ProductListDetail2/8476?rbox=r10>). Everything is done through the **Lutron Unified Control Two-Way Module**. The latest Unified Module TCM will now show RadioRa3 as an option.

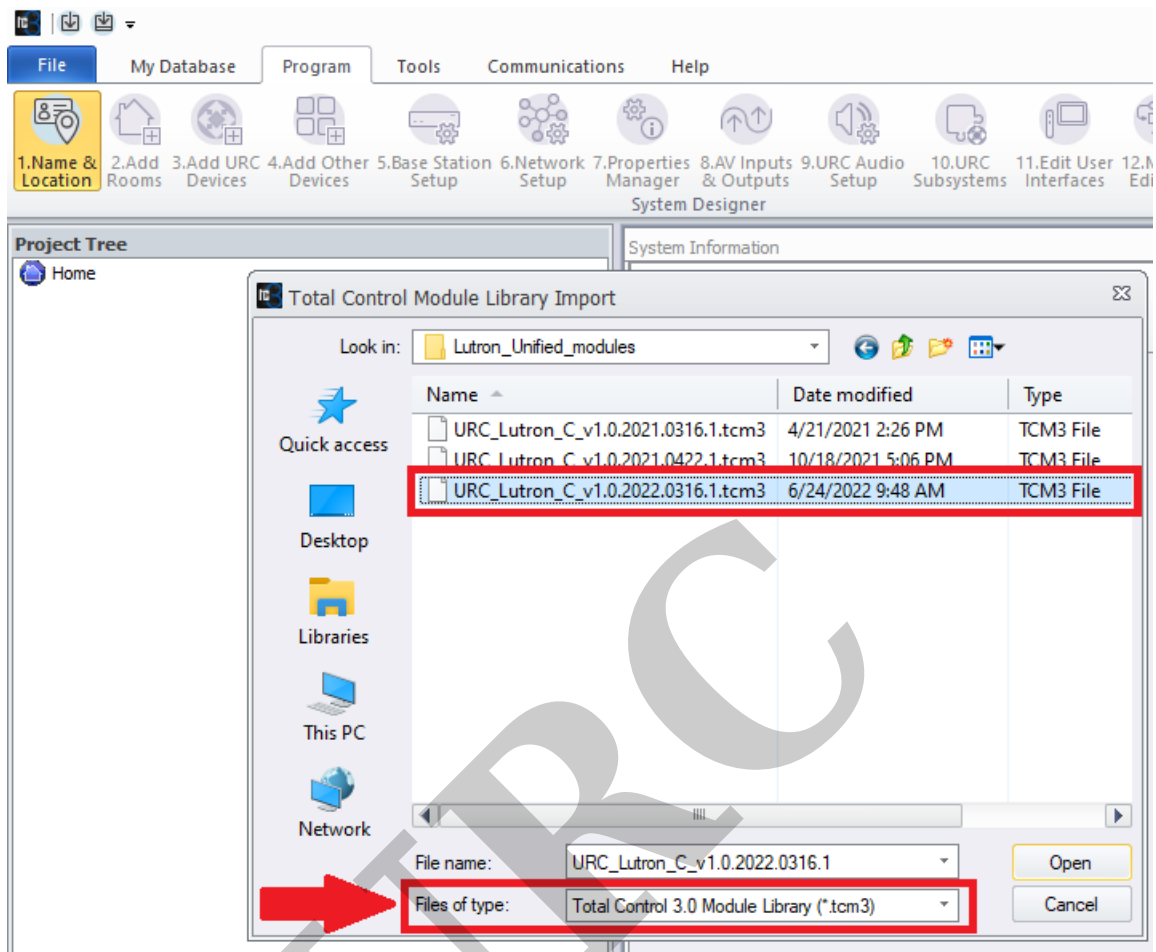


Adding the Lutron Unified Module for RadioRA3 and QSX

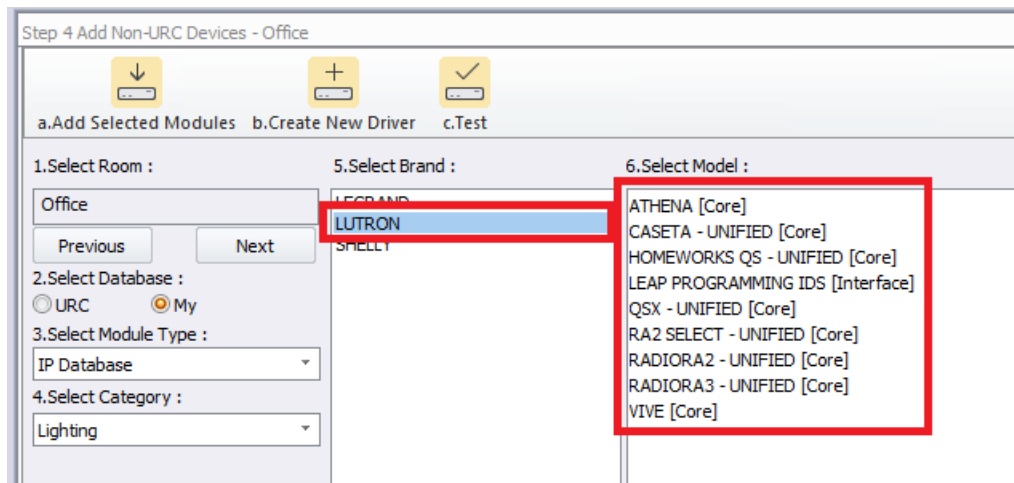
1. Import the latest TCM module using the File menu in Accelerator:



2. Select the previously downloaded TCM module. Make sure to select ".tcm3" as the file type (*the exact file name may change as updates are released*).



3. Go to Step #4, Add Other Devices, in the Accelerator software.
4. Next, navigate to the Select Database section, and select **"My, IP Database, Lighting"**. Select "Lutron" under the "Select Brand" section and then the various Lutron UNIFIED modules will be visible under the "Select Model" section.
5. Add the desired module(s) Core & Interface(s) to the desired rooms by clicking "Add Selected Modules" button, Step #4a. RADIORA3 will now be shown as an option.



6. Please refer to the full [Unified Modules - Lutron Unified Control - Integration Guide](#) for complete procedures for adding and using the module. You can download it [here](#) from the URC portal.

Note: You need to be logged into the URC dealer portal to download the module or Integration Guide.

Additional Information & Resources:

Please refer to the [Accelerator 3 Guide - Working with Two-Way Modules](#). You can download it [here](#) from the URC dealer portal.

Please refer to the full [Unified Modules - Lutron Unified Control - Integration Guide](#) for complete procedures for adding and using the module. You can download it [here](#) from the URC dealer portal.

Please refer to the [Unified Modules - Lutron Unified Control - Vive Integration Guide](#). You can download it [here](#) from the URC dealer portal.

Please refer to the [Accelerator 3 Guide - Working with Two-Way Modules](#). You can download it [here](#) from the URC dealer portal.

To learn more about Accelerator 3 configuration and programming, please see the Accelerator 3 online [Programming Guide](#).