

URC Lighting: Setting the LT-3100 Minimum Dim Level Parameter

Last Modified on 03/08/2024 12:56 pm EST

URC Lighting-Setting the LT-3100 Minimum Dim Level Parameter (URC Lighting Dimmer LT-3100)

In some instances, an LED bulb or fixture may require a minimum "ON" setting before the LED is energized enough to illuminate.

Since the default ON value is "10" (~10%) for the URC LT-3100 dimmer, you may need to adjust this default value to a higher setting for proper operation.

For example, an LED bulb may require a minimum of a 25% setting to illuminate and turn on.

This article will detail the steps required to set the **Minimum Dim Level Parameter** for a URC Dimmer.

Dimmer Parameters: URC Lighting Dimmer LT-3100

Parameters refer to the number of adjustable settings that determine how a URC Lighting device functions. Depending on the device, you can adjust how the device performs. Anything from LED color, to ramping rate, to associations (and many more) through its corresponding parameter. A specific parameter may require testing or experimentation to find the desired setting.

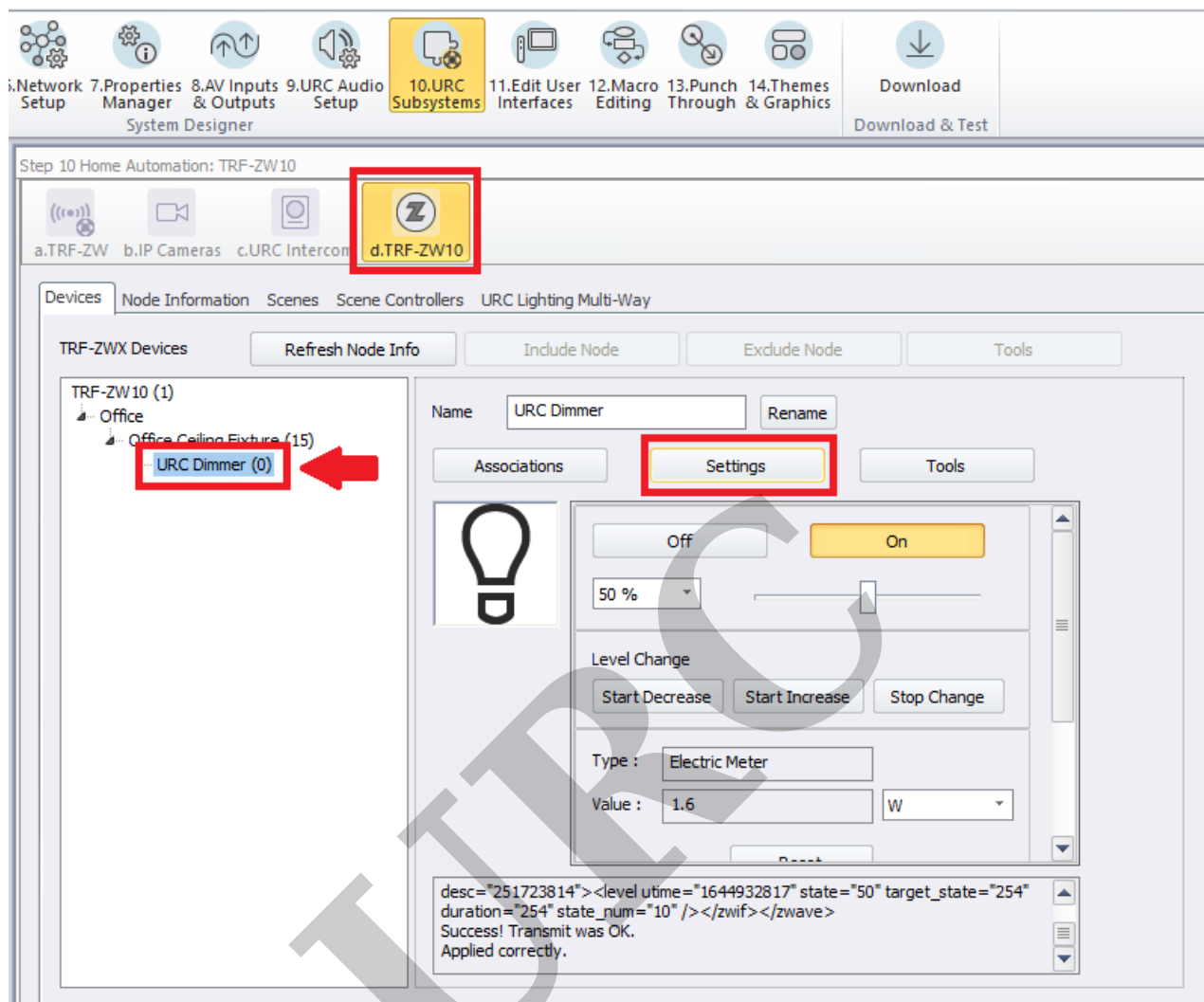
Please refer to the additional articles at the end of this article for a full listing of all adjustable parameters for URC Lighting devices.

Parameter	Name	Function	Min	Max	Default Value
5	Minimum Dim Level	Minimum Dim Level the light will adjust to before turning OFF. [1 = 1% to 45 = 45%]	1	45	10

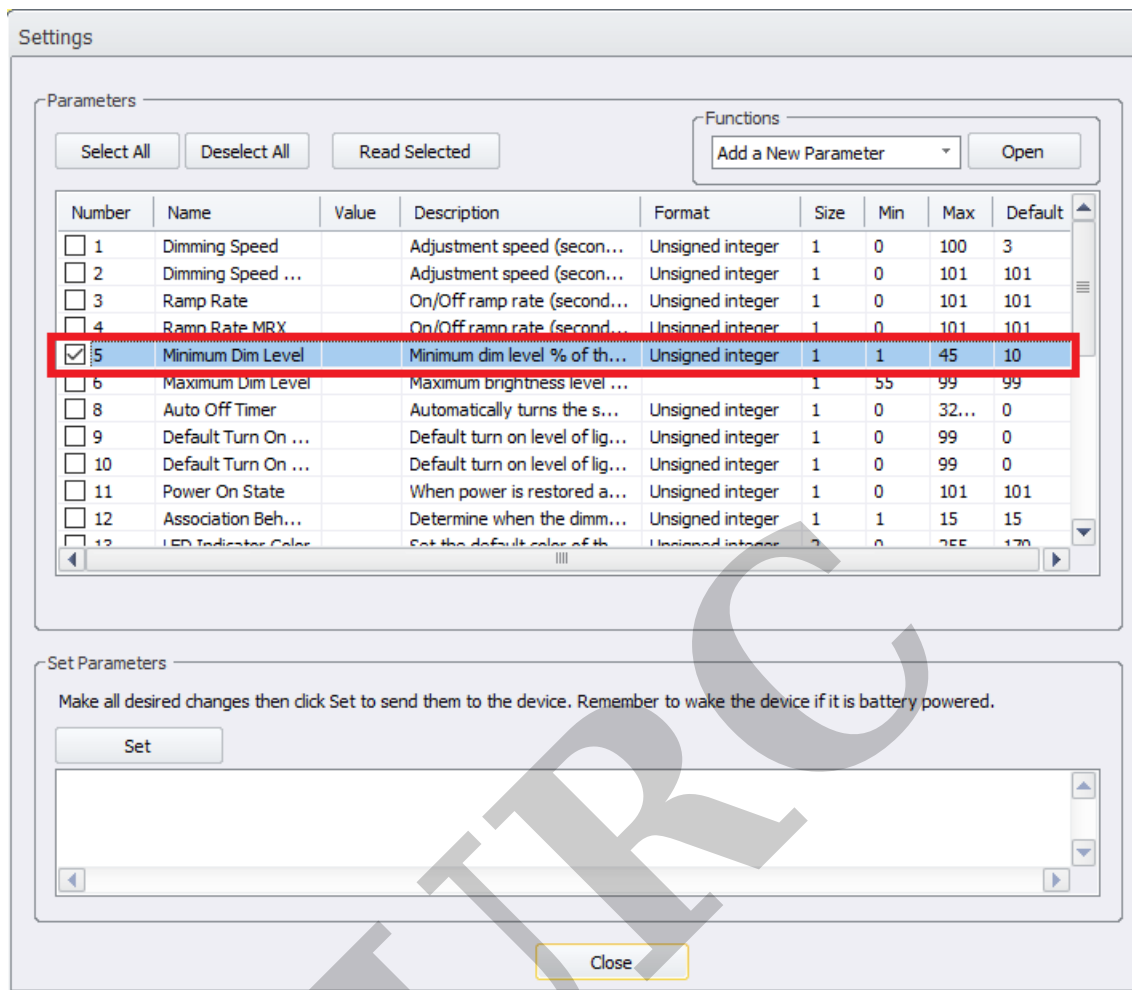
URC Dimmer - Setting the Minimum Dim Level Parameter

Step 1: In the Accelerator software, go to Step #10d as shown below.

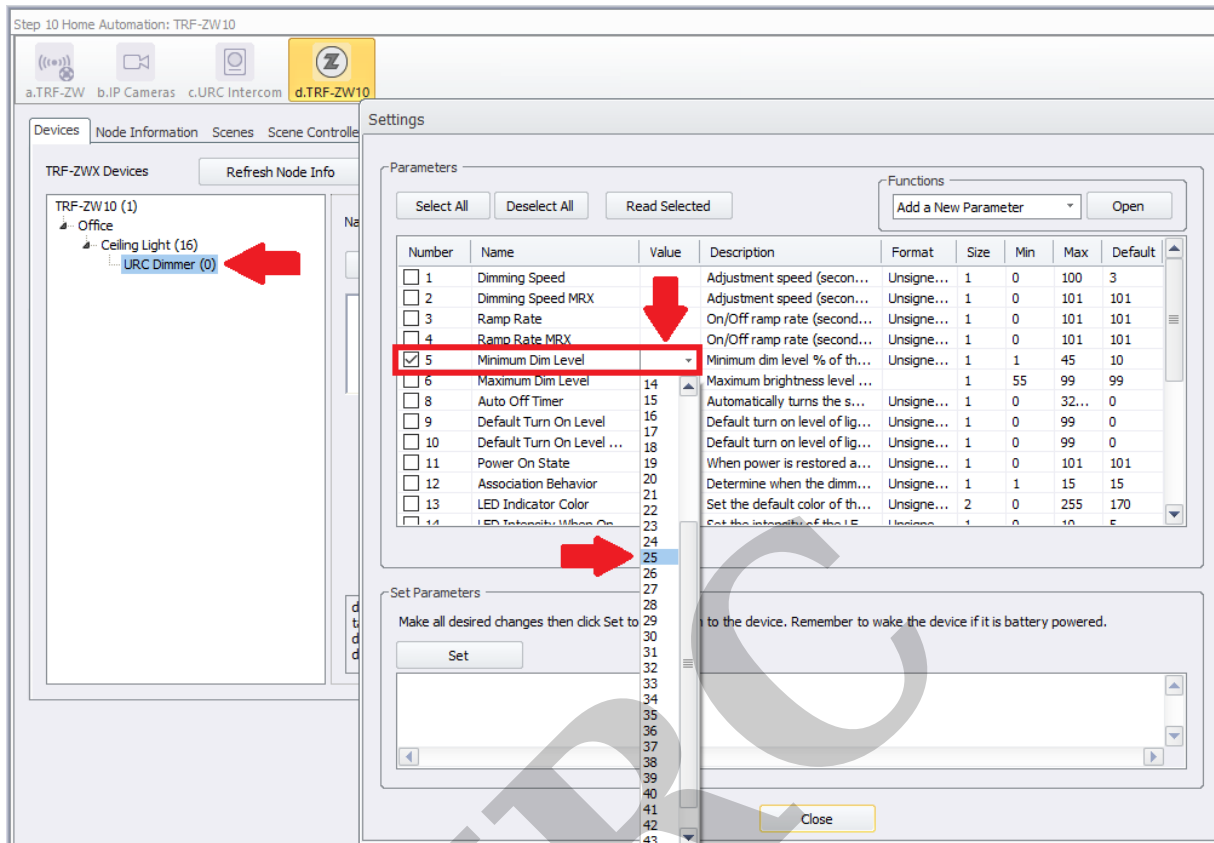
Step 2: Select the desired URC lighting device to be adjusted and then click on the **Settings** button.



Step 3: Select Parameter 5 - Minimum Dim Level by checking the box or highlighting the parameter.



Step 4: By clicking on the Value column, a drop-down selection box will appear with a listing of applicable values. Select the desired value. The selected value will now appear inside the value box.



Step 5: To set the desired value, you must click on the **Set** button under the Set Parameters section.

Pro Tip: It is possible to set multiple values at the same time prior to clicking the Set button. For example, you could choose to set the minimum and maximum levels for a device and set them both at the same time.

Settings

Parameters

Select All Deselect All Read Selected

Functions

Add a New Parameter Open

Number	Name	Value	Description	Format	Size	Min	Max	Default	
<input type="checkbox"/>	1		Dimming Speed	Adjustment speed (secon...	Unsigne...	1	0	100	3
<input type="checkbox"/>	2		Dimming Speed MRX	Adjustment speed (secon...	Unsigne...	1	0	101	101
<input type="checkbox"/>	3		Ramp Rate	On/Off ramp rate (second...	Unsigne...	1	0	101	101
<input type="checkbox"/>	4		Ramp Rate MRX	On/Off ramp rate (second...	Unsigne...	1	0	101	101
<input checked="" type="checkbox"/>	5	25	Minimum Dim Level	Minimum dim level % of th...	Unsigne...	1	1	45	10
<input type="checkbox"/>	6		Maximum Dim Level	Maximum brightness level ...		1	55	99	99
<input type="checkbox"/>	8		Auto Off Timer	Automatically turns the s...	Unsigne...	1	0	32...	0
<input type="checkbox"/>	9		Default Turn On Level	Default turn on level of lig...	Unsigne...	1	0	99	0
<input type="checkbox"/>	10		Default Turn On Level ...	Default turn on level of lig...	Unsigne...	1	0	99	0
<input type="checkbox"/>	11		Power On State	When power is restored a...	Unsigne...	1	0	101	101
<input type="checkbox"/>	12		Association Behavior	Determine when the dimm...	Unsigne...	1	1	15	15
<input type="checkbox"/>	13		LED Indicator Color	Set the default color of th...	Unsigne...	2	0	255	170
<input type="checkbox"/>	14		LED Intensity When On	Set the intensity of the LE...	Unsigne...	1	0	10	5

Set Parameters

Make all desired changes then click Set to send them to the device. Remember to wake the device if it is battery powered.

Set

Close

Step 6: After clicking the **Set** button, the new desired parameters will be sent to the device. A "set OK" notification will display in the Set Parameters window.

Settings

Parameters

Select All Deselect All Read Selected

Functions
Add a New Parameter Open


Number	Name	Value	Description	Format	Size	Min	Max	Default
<input type="checkbox"/>	1 Dimming Speed		Adjustment speed (secon...	Unsigned integer	1	0	100	3
<input type="checkbox"/>	2 Dimming Spee...		Adjustment speed (secon...	Unsigned integer	1	0	101	101
<input type="checkbox"/>	3 Ramp Rate		On/Off ramp rate (second...	Unsigned integer	1	0	101	101
<input type="checkbox"/>	4 Ramp Rate MRX		On/Off ramp rate (second...	Unsigned integer	1	0	101	101
<input checked="" type="checkbox"/>	5 Minimum Dim ...	26	Minimum dim level % of th...	Unsigned integer	1	1	45	10
<input type="checkbox"/>	6 Maximum Dim...		Maximum brightness level ...		1	55	99	99
<input type="checkbox"/>	8 Auto Off Timer		Automatically turns the s...	Unsigned integer	1	0	32...	0
<input type="checkbox"/>	9 Default Turn ...		Default turn on level of lig...	Unsigned integer	1	0	99	0
<input type="checkbox"/>	10 Default Turn ...		Default turn on level of lig...	Unsigned integer	1	0	99	0
<input type="checkbox"/>	11 Power On State		When power is restored a...	Unsigned integer	1	0	101	101
<input type="checkbox"/>	12 Association B...		Determine when the dimm...	Unsigned integer	1	1	15	15
<input type="checkbox"/>	13 LED Indicator...		Set the default color of th...	Unsigned integer	2	0	255	170
<input type="checkbox"/>	14 LED Intensity		Set the intensity of the LE...	Unsigned integer	1	0	10	5

Set Parameters

Make all desired changes then click Set to send them to the device. Remember to wake the device if it is battery powered.

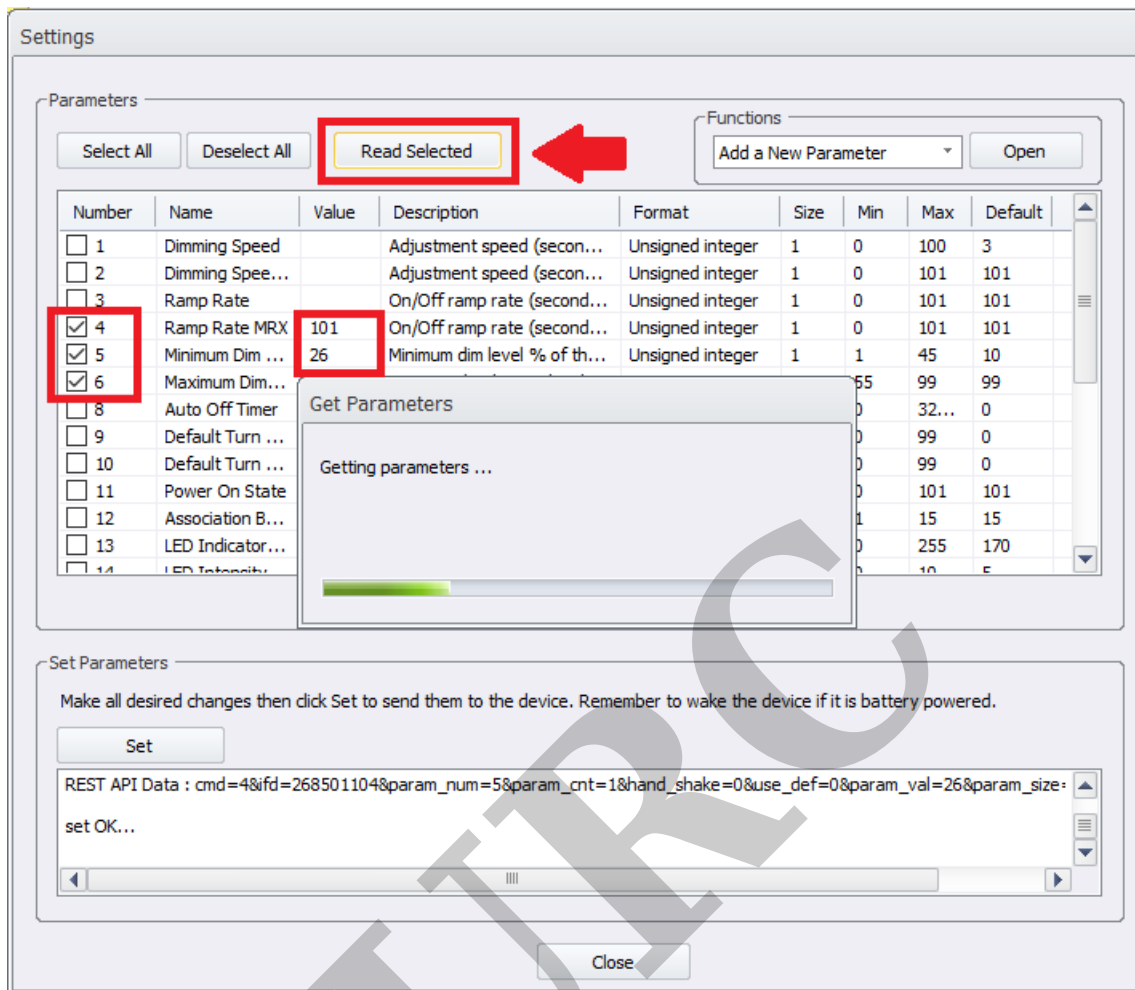
Set

REST API Data : cmd=4&fd=268501104¶m_num=5¶m_cnt=1&hand_shake=0&use_def=0¶m_val=26¶m_size=

set OK... 

Close

Step 7: If you need to verify an existing setting prior to changing the value setting or if you simply need to verify a setting just made, you can use the **Read Selected** button. You will first need to check the boxes for any parameters that you wish to verify. The current value(s) will be displayed in the Value column after the "Getting Parameters" sequence is finished.



Additional Information & Resources:

Please refer to the section on [URC Lighting](#) for additional information using URC Lighting in Accelerator 3.

Please refer to the article [URC Dimmer \(LT-3100\) Parameters](#) for additional information on setting device parameters.

Please refer to the article [URC Switch \(LT-3200\) Parameters](#) for additional information on setting device parameters.

Please refer to the article [URC Dimmer/Switch \(LT-3300\) Parameters](#) for additional information on setting device parameters.

Please refer to the article [URC Dimmer/Switch \(LT-3300\) Specifications](#) for additional information for this device.

Please refer to the article [LT-3300 Single Pole Connection Examples](#) for additional information for this device.

Please refer to the article [LT-3300 3-Way Connection Examples](#) for additional information for this device.

To learn more about Accelerator 3 configuration and programming, please see the Accelerator 3 online [Programming Guide](#).

URC