

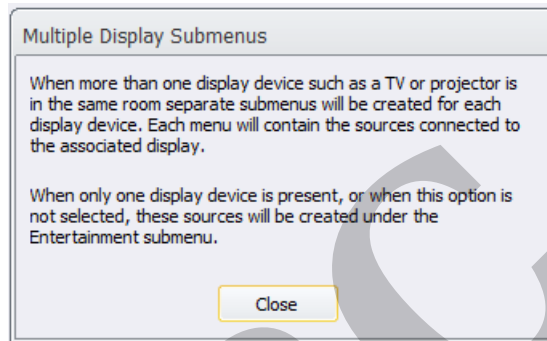
Using the Multiple Display Option in Accelerator

Last Modified on 06/06/2023 6:09 pm EDT

Using the Multiple Display Option in Accelerator

URC Accelerator 3 software provides countless options to configure and optimize settings to achieve performance and flexibility for almost any application.

This article details how to select and use the **Multiple Display Option** in Accelerator.

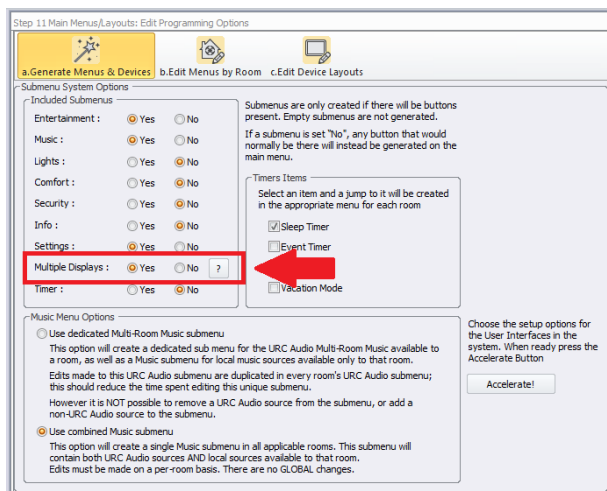


Using the Multiple Display Option in Accelerator

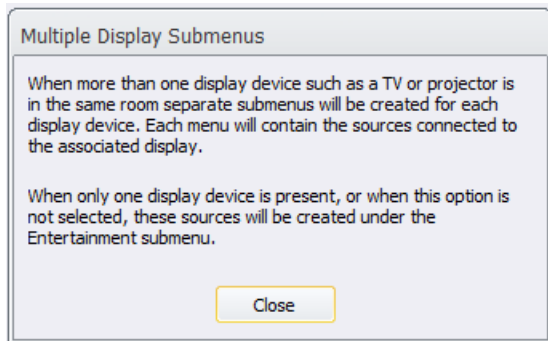
The Multiple Display Option in Accelerator makes it very easy to automatically generate the programming macros when using multiple TV's or displays with a single or multiple sources. This option will generate the User Interface buttons as well as the programming macros for **all available sources on all TV's** or display devices.

This is very helpful when using a left, center & right TV scenario for a Media Room or when using a TV & a projector in the same room, for example.

From the Accelerator program Step #11a, select the **Multiple Displays** "Yes" radio button option as shown below:

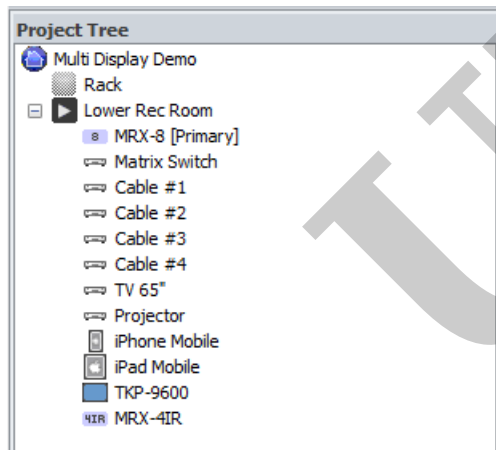


Clicking on the ? button will give a full description of how the Multiple Display Submenus will function if selected as an option.

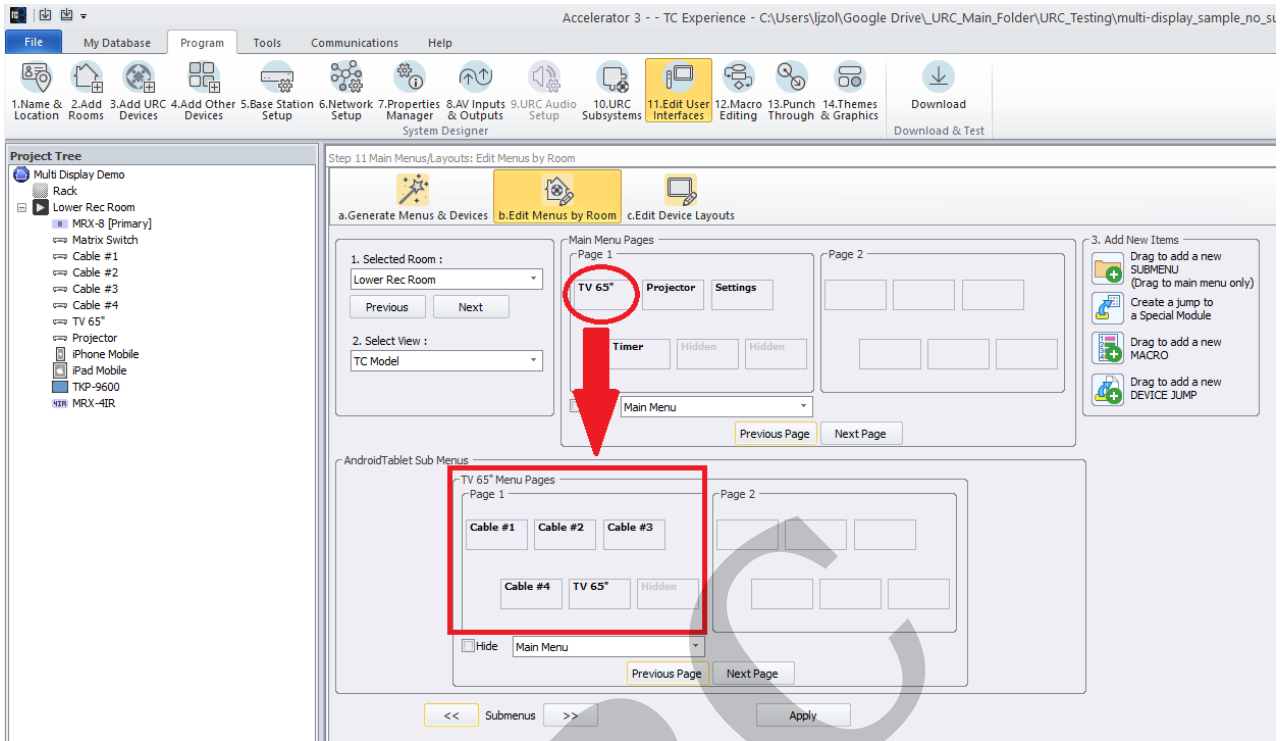


EXAMPLE:

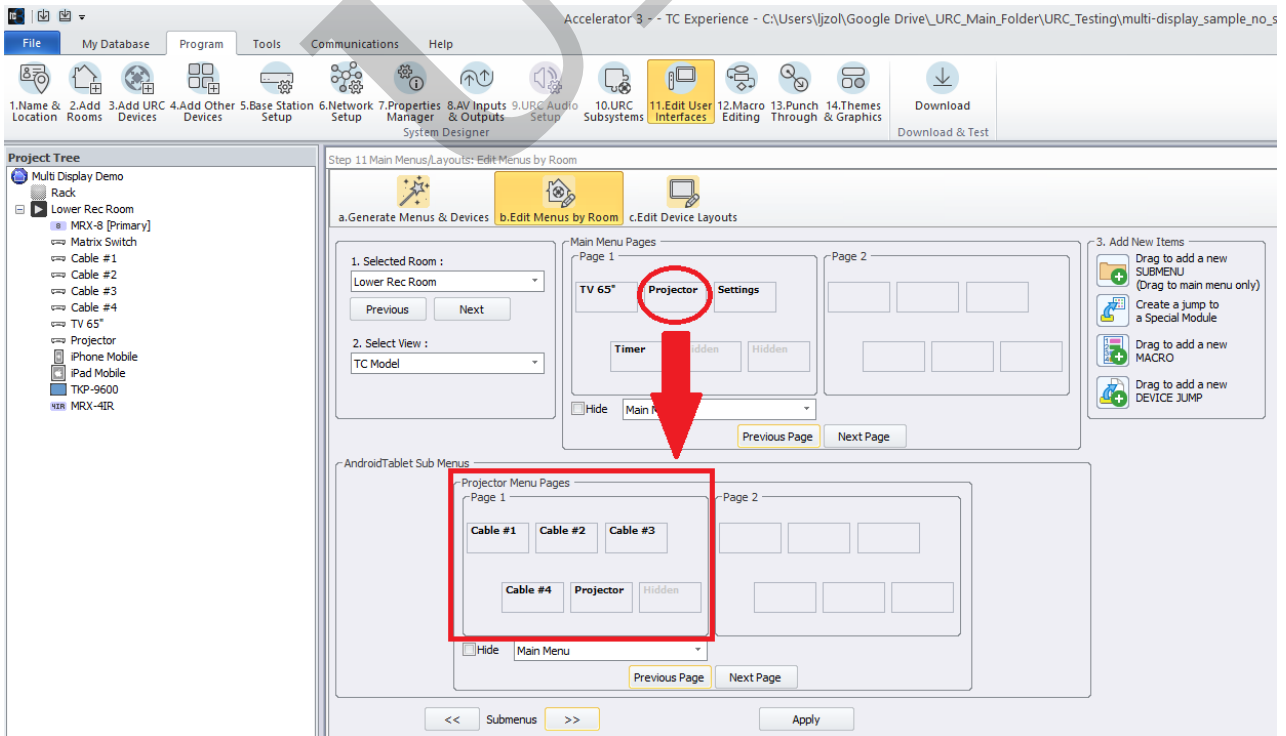
In the example below, for the Lower Rec Room, we have added 1 (one) 65" TV, 1 (one) projector and 4 (four) cable boxes using a matrix switch to distribute the video signal.



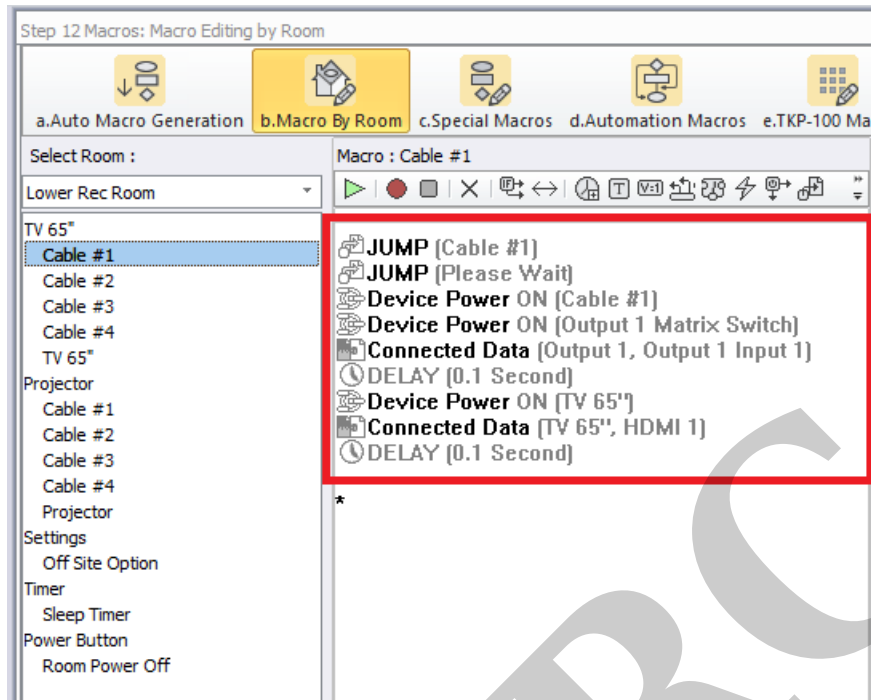
By selecting the **Multiple Display Option** in Accelerator, we can see that all 4 cable boxes are available for viewing on the 65" TV submenu.



By selecting the **Multiple Display Option** in Accelerator, we can also see that all 4 cable boxes are available for viewing in the projector submenu as well.



In addition, all macros are automatically generated for each cable box to each device; both the 65" TV and the video projector. No additional programming is required!



Additional Information & Resources:

Please refer to the [Total Control - Custom Device Layouts Programming Guide](#) for additional information on selecting the appropriate panel configuration.

To learn more about Accelerator 3 configuration and programming, please see the Accelerator 3 online [Programming Guide](#).