

# How to Use MX-series Remotes With Crestron

Last Modified on 05/22/2023 11:46 am EDT

## How to Use MX-series Remotes With Crestron®

In some cases, it may be possible to use a URC MX-series remote control via RF (418MHz) to operate a Crestron control system.

Additional Crestron® hardware is required in addition to the URC remote, specifically an RF receiver to receive RF commands directly from the URC remote.

This article details the basic steps required to **Use MX-series Remotes With Crestron®**.

---

## Crestron® Panel Emulation via One-Way RF - How to Access the Crestron® Trigger Codes Using the Complete Control Program Software

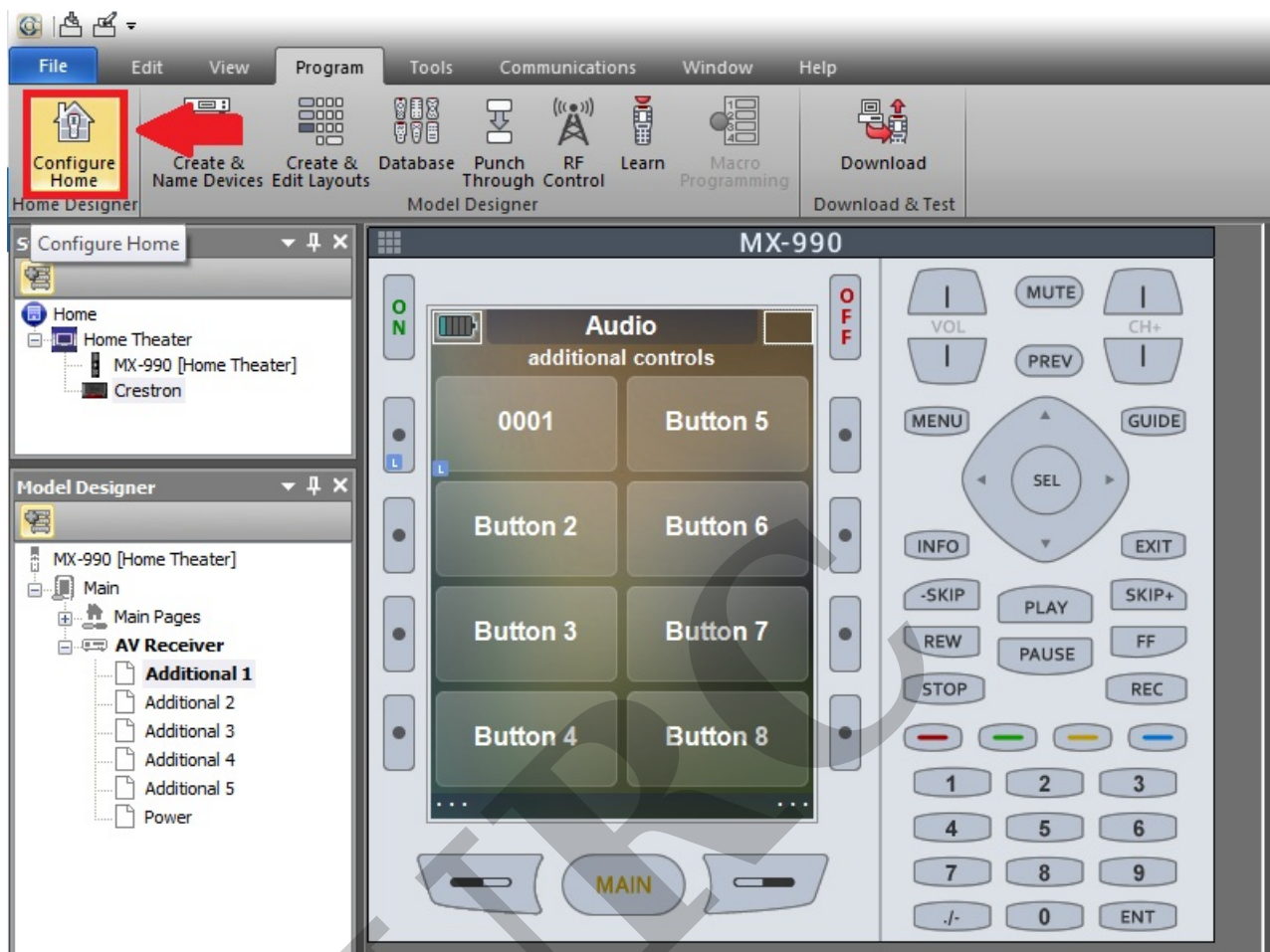
All 15,360 RF Trigger codes are in the CCP (Complete Control Program) database arranged in the 15 Panel IDs, with 1024 functions in each set. Use CCP's IR Database Navigator to drag the commands you want to the buttons you want, then in RF Setting add an imaginary MRF-350 base station named "Crestron" and set the RF ID to 0.

*Note: The Brand is now listed as "CRESTRON (RF Panel Emulation)". Previous versions of software listed it as "CRESTRON (Trigger Codes)".*

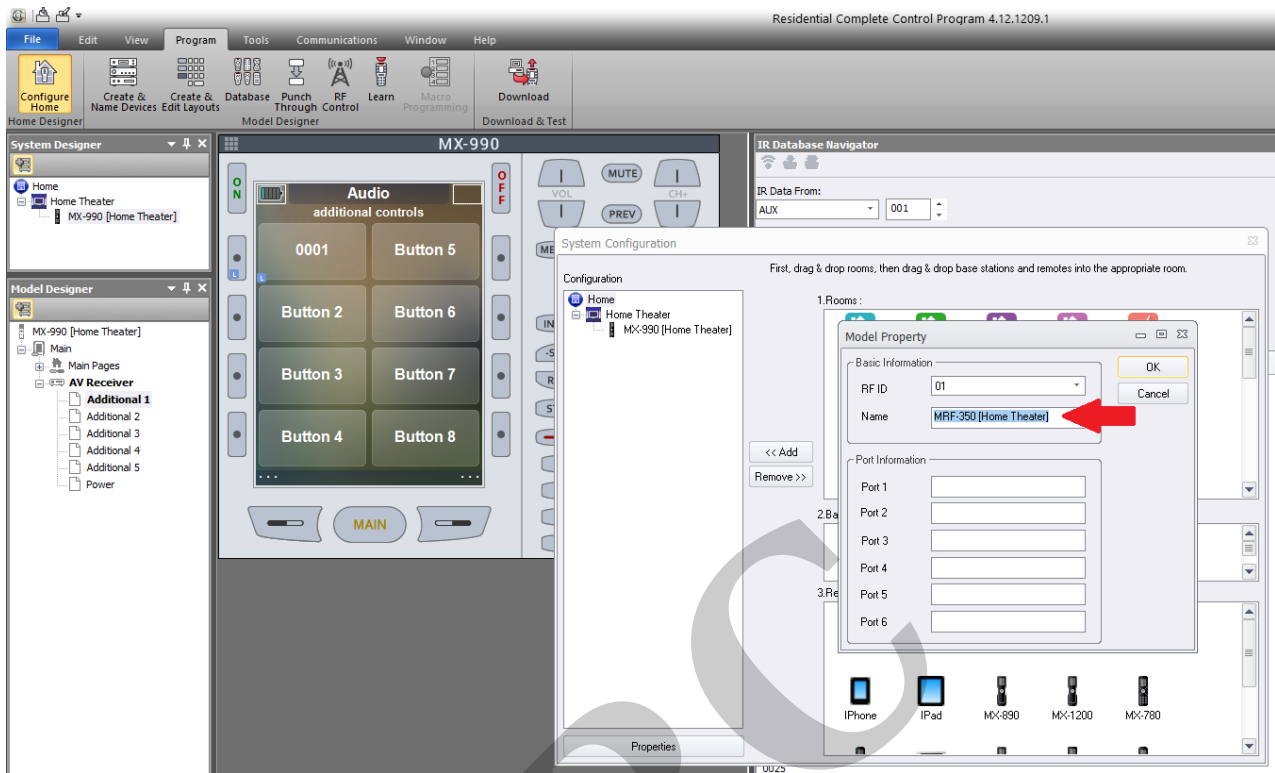
**Important Note:** The URC MX-series remote control **must** be using the RF-418 frequency (418MHz) and **NOT** the RF-433 frequency (433MHz) used on the URC "i-series" remotes (ie: SKU: MX-780i, SKU: MX-790i, SKU: MX-890i, MX-990i, MX3000i, etc.).

---

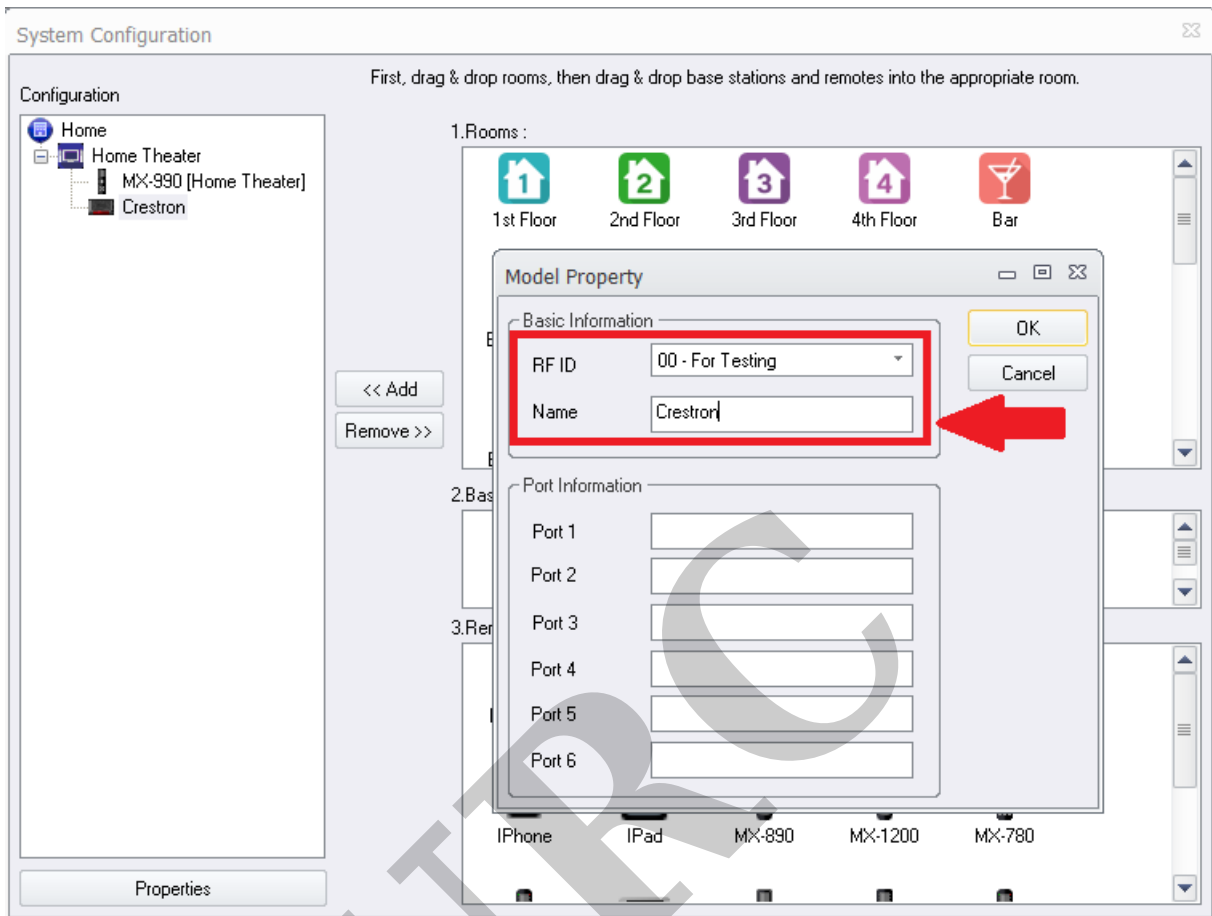
**Step 1:** Add your URC MX-series remote, add device pages and then add an MRF-350 base station using the *Configure Home* option.



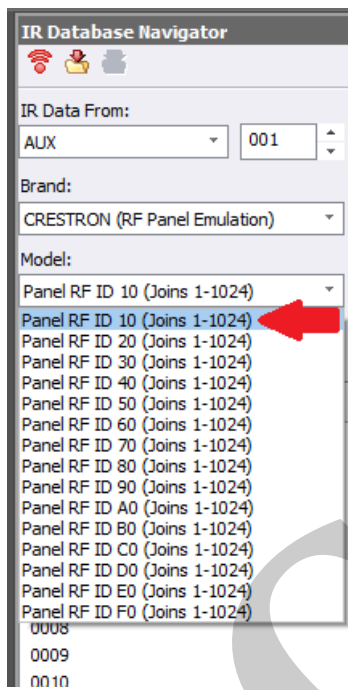
**Step 2:** After adding the MRF-350 to the project, the base station will be labeled using the default name and the default RF ID (as shown below):



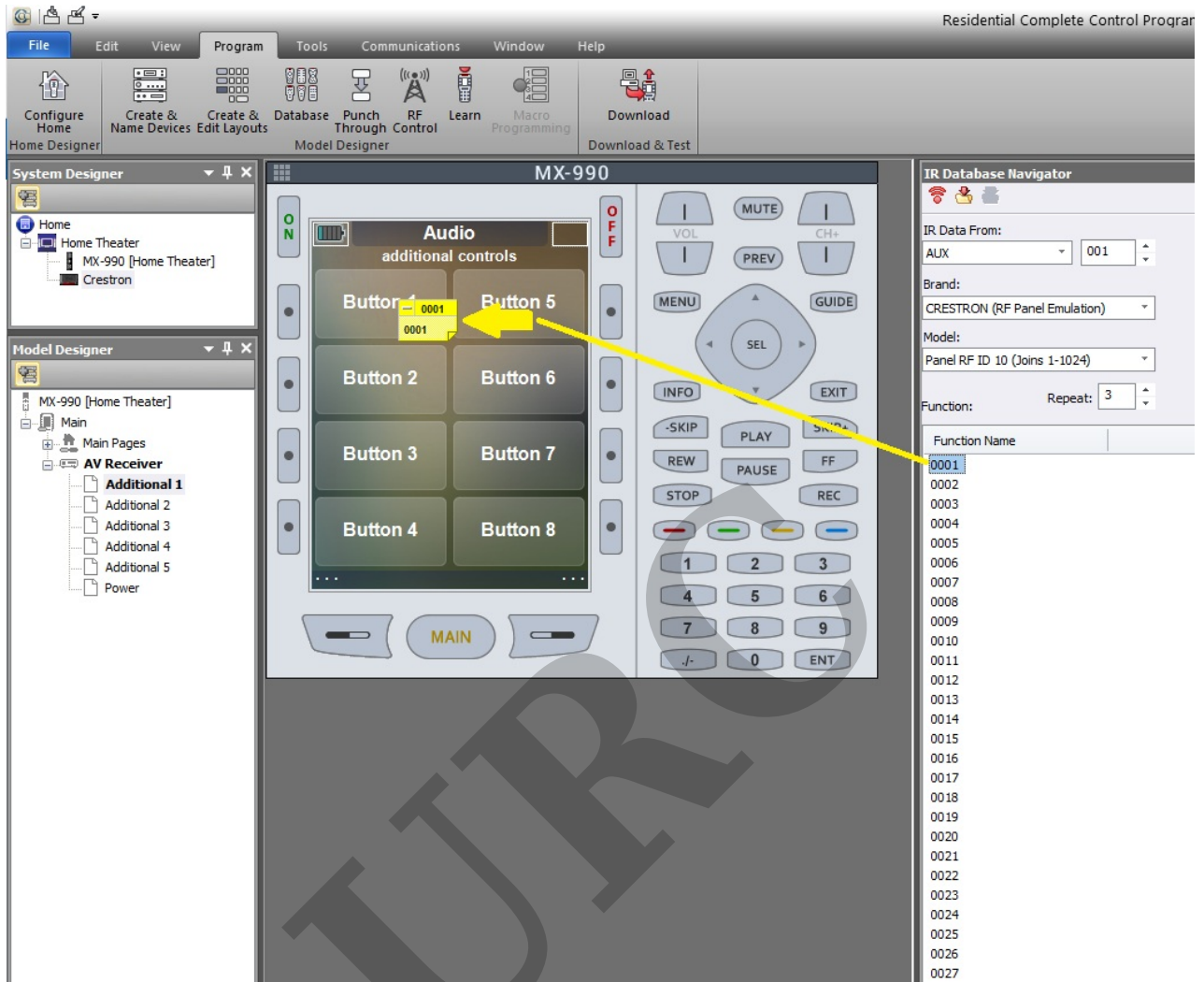
**Step 3:** Label the MRF-350 Base Station “Crestron” and set the RF ID to “00 - For Testing”



**Step 4:** Use the IR Database Navigator, select IR Data From: AUX>Brand: Crestron>Model: Panel RF ID [xx] where “xx” is the Panel RF ID that you require. 15 Panel RF ID’s are available as shown below.



**Step 5:** Using the IR Database Navigator, select the desired Function Name command (ie: 0001, 0002, etc) or Trigger Code and drag it over to the desired UI device button. Continue this operation using any additional Trigger Codes required.



### Additional Information & Resources:

The URC MX-series remote control **must** be using the RF-418 frequency (418MHz) and **NOT** the RF-433 frequency (433MHz) used on the URC "I-series" remotes (ie: SKU: MX-780I, SKU: MX-79, SKU: MX-890I, MX-990I, MX3000I, etc.).