

Updating the HDA-SW5 Firmware (Using Accelerator)

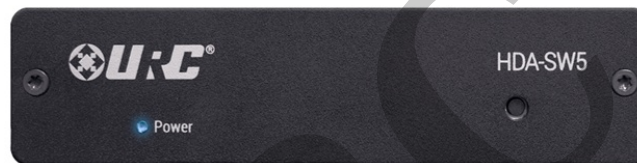
Last Modified on 01/31/2025 11:37 am EST

The following article details the process to **update the firmware** of the **HDA-SW5 Network Switch** using the new **firmware updater tool** built into the Accelerator software application.

The HDA-SW5 firm.ware version may now be checked and/or updated through the URC Device section in **Step #6-Network Setup**.

Updating the HDA-SW5 Firmware (Using Accelerator)

Please Note: This article **replaces** an earlier article detailing using the standalone firmware update tool.

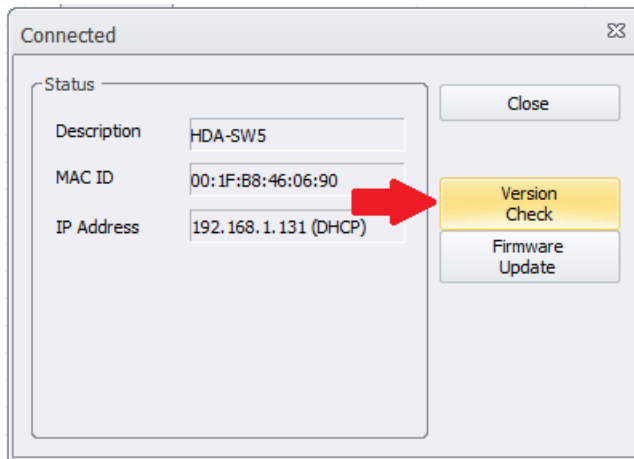


1. Start by selecting Step #6-Network Setup in the Accelerator software. This will allow you to verify the existing firmware for a previously identified HDA-SW5 switch.

The screenshot shows the Accelerator software interface. The '6. Network Setup' menu item is highlighted with a red box. Below it, the 'Step 6 Network Settings: URC Devices' window is open, showing a table of discovered devices. A red arrow points to the 'VIEW' button in the 'Type' column for the HDA-SW5 device.

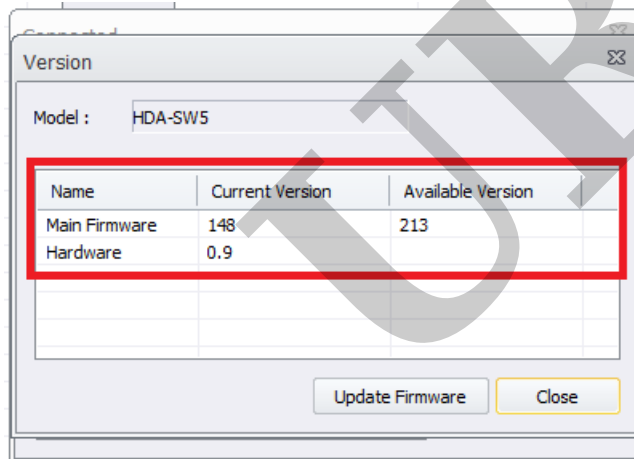
Room	Device	Mac Address	IP Address	Type	Refresh	Discovered:HDA-SW5	Mac Address	IP Address	Description
Main Bar	MRX-8	00:1F:B8:22:2B:D8	192.168.1.185	DHCP	Assign	HDA-SW5	00:1F:B8:46:06:90	192.168.1.131	HDA-SW5
Main Bar	HDA-1600-70V	00:1F:B8:42:01:EA	192.168.1.139	DHCP					
Main Bar	HDA-SW5	00:1F:B8:46:06:90	192.168.1.131	VIEW	Set Device Network Option				
Main Bar	TKP-9600	00:1F:B8:3D:02:C0	192.168.1.176	DHCP					
Main Bar	TDC-7100	00:1F:B8:31:08:A7	192.168.1.144	DHCP					
Main Bar	TDC-9100	00:1F:B8:3E:05:3C	192.168.1.150	DHCP					

2. Next, click on the **VIEW** area under the Type section shown above. This will open the window shown below allowing you to check the existing firmware version. Click on the **Version Check** button to open the version details window.

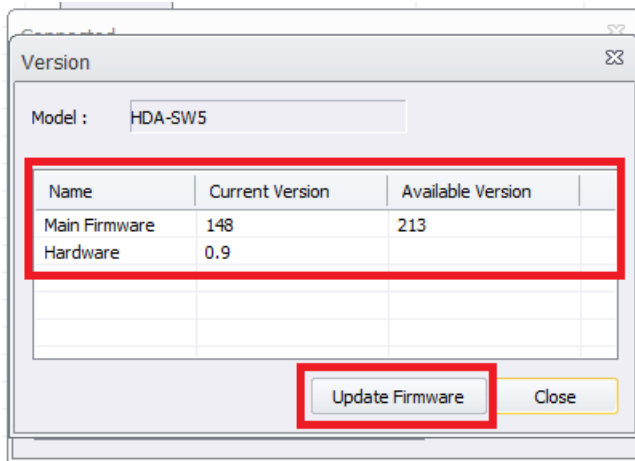


3. The Version details window will allow you to view the **Current Version** and the **Available Version** of the firmware for the HDA-SW5.

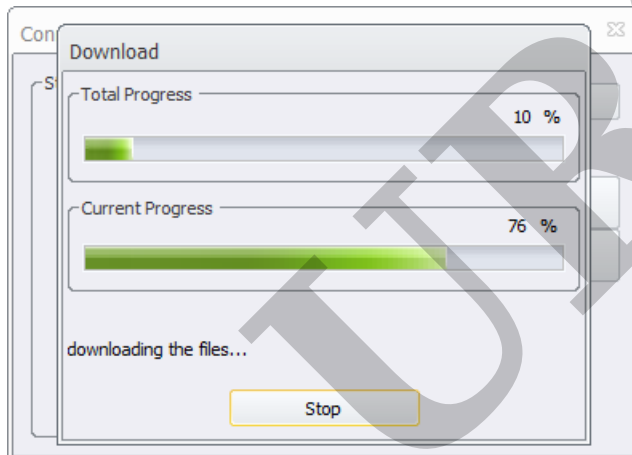
The example below shows a newer firmware *available version* than what is currently installed on the device.



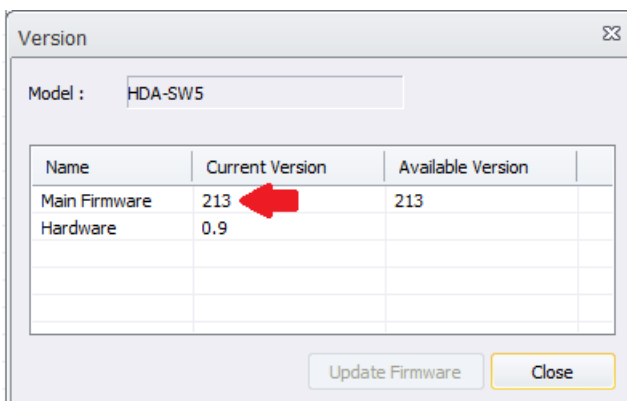
4. To update to the most current version of the firmware of the HDA-SW5 switch, select the **Update Firmware** button.



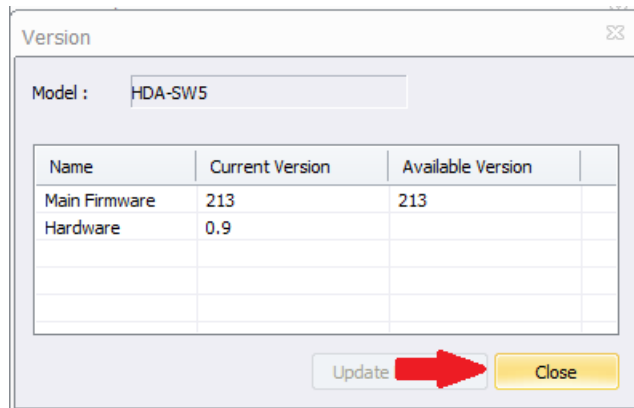
- The updater will download the most current version to the switch (as shown below). Please make sure your laptop or PC firewall is disabled if the download fails for any reason.



- After the update completes, give the device a minute to reboot. You can then go back and verify that the device has been updated by using the same process as detailed above. The example shown below verifies that the firmware has been updated to the latest available version.



7. You can then exit the updater and version window using the Close button.



Additional Information & Resources:

To learn more about HDA products and programming, please see the [HDA Programmers Guide](#) or the Accelerator 3 online [Programming Guide](#).